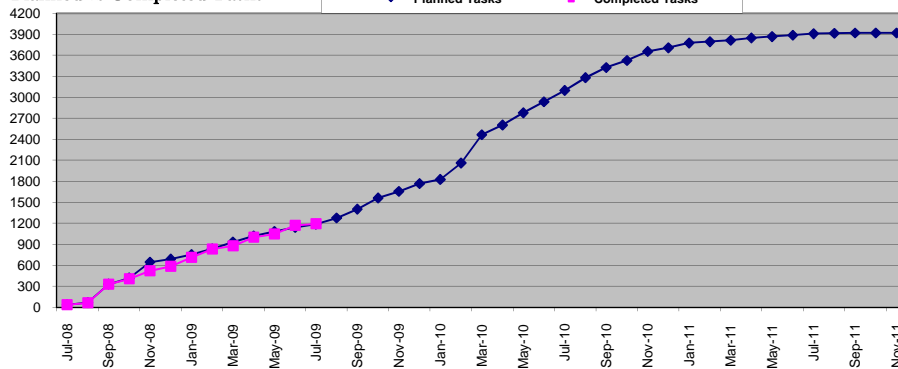


Pilot Major Go-Lives	Target Date
Admissions	10/1/2009
Financial Aid	2/1/2010
Registration	3/15/2010
Transcripts	9/1/2010
Co-Pilot Major Go-Lives	Target Date
Admissions	10/1/2010
Financial Aid	2/1/2011
Registration	3/15/2011
Transcripts	9/1/2011

Modifications	Count
Drafted	71
Approved	43
Developed	32
Tested	29

Start Date	Project Milestone	End Date	Status
08/01/08	Academic Structure Defined	10/01/08	Completed
09/01/08	Course Catalog Data Mapping	01/15/09	Completed
10/01/08	Bio/Demo Conversion	03/01/09	In-Progress
10/01/08	Production Use – Admissions	10/1/2009	In-Progress
10/01/08	Future Term Class Schedule Initiated	10/1/2009	In-Progress
10/01/08	Financial Aid ISIRs Loaded	2/1/2010	In-Progress
12/01/08	Enrollment/Course Registration	3/1/2010	In-Progress
10/01/08	Financial Aid Award Letters Generated	4/1/2010	In-Progress
10/01/08	Production Use - Student Payments	5/1/2010	In-Progress
04/01/09	Production Use - Academic Transcripts	8/1/2010	In-Progress
Co-Pilot Milestones			
11/01/09	Production Use – Admissions	10/1/2010	Not Started
11/01/09	Future Term Class Schedule Initiated	10/1/2010	Not Started
05/01/10	Financial Aid ISIRs Loaded	2/1/2011	Not Started
05/01/10	Enrollment/Course Registration	3/1/2011	Not Started
		4/1/2011	
05/01/10	Financial Aid Award Letters Generated		Not Started
05/01/10	Production Use - Student Payments	5/1/2011	Not Started
		8/1/2011	
05/01/10	Production Use - Academic Transcripts		Not Started

Planned vs Completed Tasks



Tasks In Progress (> 0%, but < 100% Complete) = 157

Recent Activity / Accomplishments (Last 30 Days):

- (1) Continued testing, refinement of processes and writing Business Process Guides - SF, SR, & FA.
- (2) AA continues to build degree requirements.
- (3) Admissions continues to test & refine Query Based Updates (QBUs).
- (4) Conducted UPK training for pilot trainers and Train the Trainers sessions at UNLV
- (5) Completed first round of Career/Program/Plan conversion, which is a pre-req to converting historical enrollments.
- (6) Building security for Admission go-live is on-going at both pilot institutions.
- (7) Portal development continues at both pilot institutions.
- (8) EPM (data warehouse) team has the ETLs (extracts) working for the Share, UNLV to follow shortly.
- (9) SR team is preparing for the go-live of Catalog and Class Schedule data.

Key Upcoming Activities (Next 30 Days):

- (1) Continue to test, complete test scripts, and finalize BPGs.
- (2) Training to begin for UNLV's Admission go-live - scheduled for Sept. 14, 2009
- (3) Testing of the Admission Application interface for UNLV & TMCC using a generic format that will work for co-pilots as well.
- (4) Continue to build security for training, testing and go-live purposes at UNLV & TMCC.
- (5) Continue running conversions of Career/Program/Plan data and start enrollment history data mapping
- (6) Begin moving setups and data to the new Production environments to support the AD go-lives.
- (7) FA to finalize setups & processes for Perkins Loans, Disbursement and Pell Grants.
- (8) Official Bio/Demo conversion into Production will occur just before UNLV's Sept. 14, 2009 Admission Go-Live.

Current Issues / Concerns:

- (1) Anxiety levels for team members' are increasing as we approach go-live dates.
- (2) Institutions are dealing with the impacts of mandatory and voluntary staff reductions and other budgetary containment measures.
- (3) Resolution of the data warehouse reporting tool(s).