

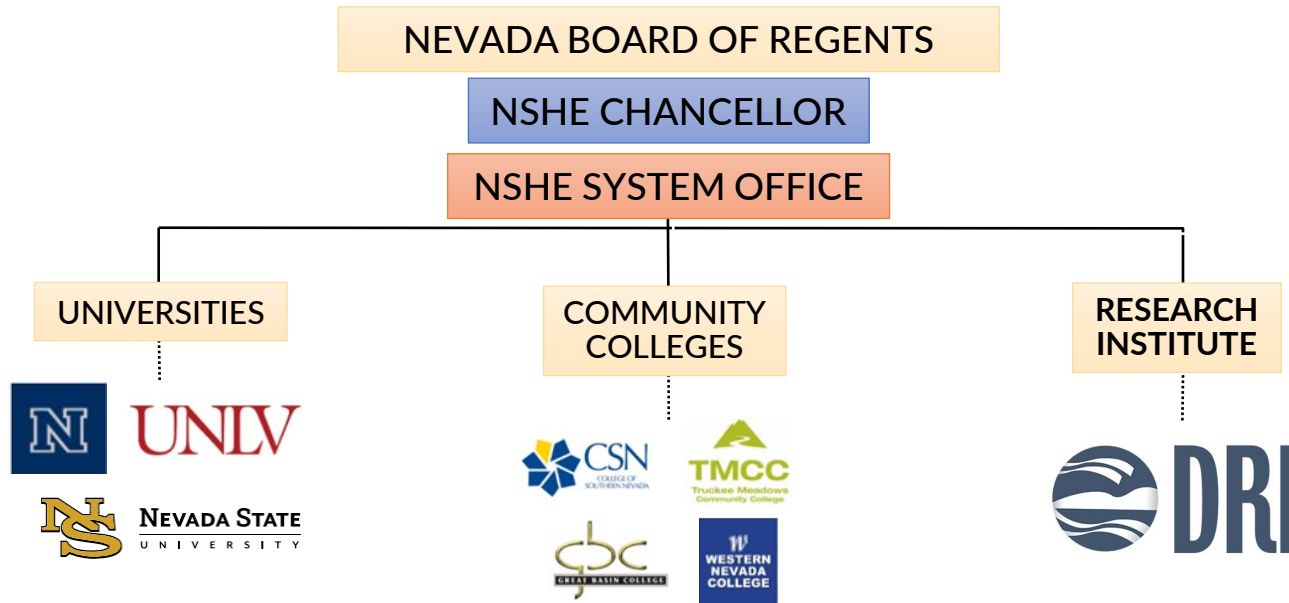


Impactful science, inspiring solutions.

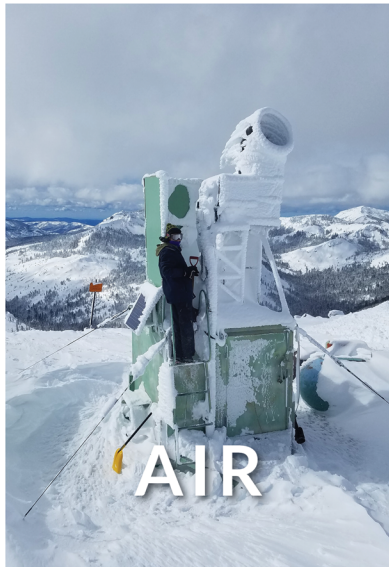
DRI Funding Overview
Committee on Higher Education Funding
Feb. 12, 2024

WHO WE ARE

NEVADA SYSTEM OF HIGHER EDUCATION

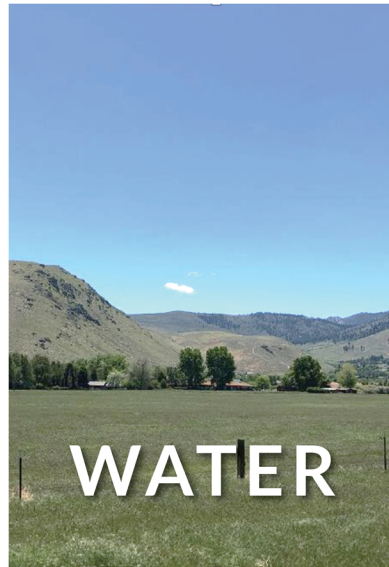


- 1 of 8 institutions within the Nevada System of Higher Education
- 2 main campuses in Las Vegas and Reno
- Over 60 years of environmental research and discovery
- More than 600 scientists, engineers, students, and support staff
- ~140 PhDs in more than 40 disciplines
- \$47M in sponsored research grants and contracts annually



AIR

**CLOUD
SEEDING**



WATER

**NEVADA WATER
RESOURCES
INITIATIVE**



PEOPLE

**STEM
EDUCATION**



EARTH

ARCHEOLOGY



FIRE

**WILDFIRE/
SMOKE**

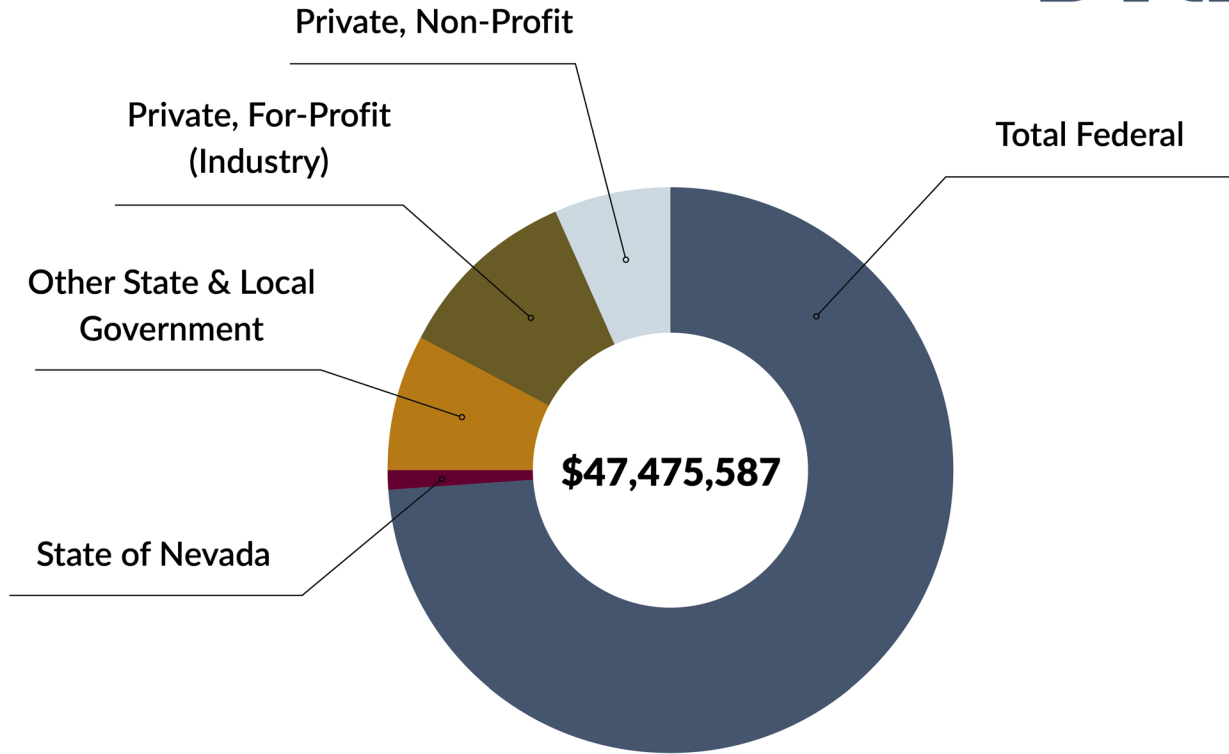
FY23

GRANT & CONTRACT FUNDING



TOTAL FEDERAL	\$35,115,864	73.97%
Dept. of Commerce (DoC)	\$6,143,650	17.50%
Dept. of Defense (DoD)	\$5,842,803	16.64%
Dept. of Energy (DOE)	\$7,607,541	21.66%
Dept. of the Interior (DOI)	\$3,255,247	9.27%
Dept. of Education (USDE)	\$1,192,140	3.39%
Other Federal Agencies	\$3,696,618	10.53%
Federal Pass Thru	\$7,377,865	21.01%
TOTAL NON-FEDERAL	\$12,359,723	26.03%
State of Nevada	\$613,271	1.29%
Other State & Local Government	\$3,654,987	7.70%
Private, For-Profit (Industry)	\$5,057,962	10.65%
Private, Non-Profit	\$3,033,503	6.39%

TOTAL FY23 AWARDS \$47,475,587



**NATIONAL
SCIENCE
FOUNDATION
RANKING**

Top 9%
GEOSCIENCES OVERALL
39 out of 437 institutions

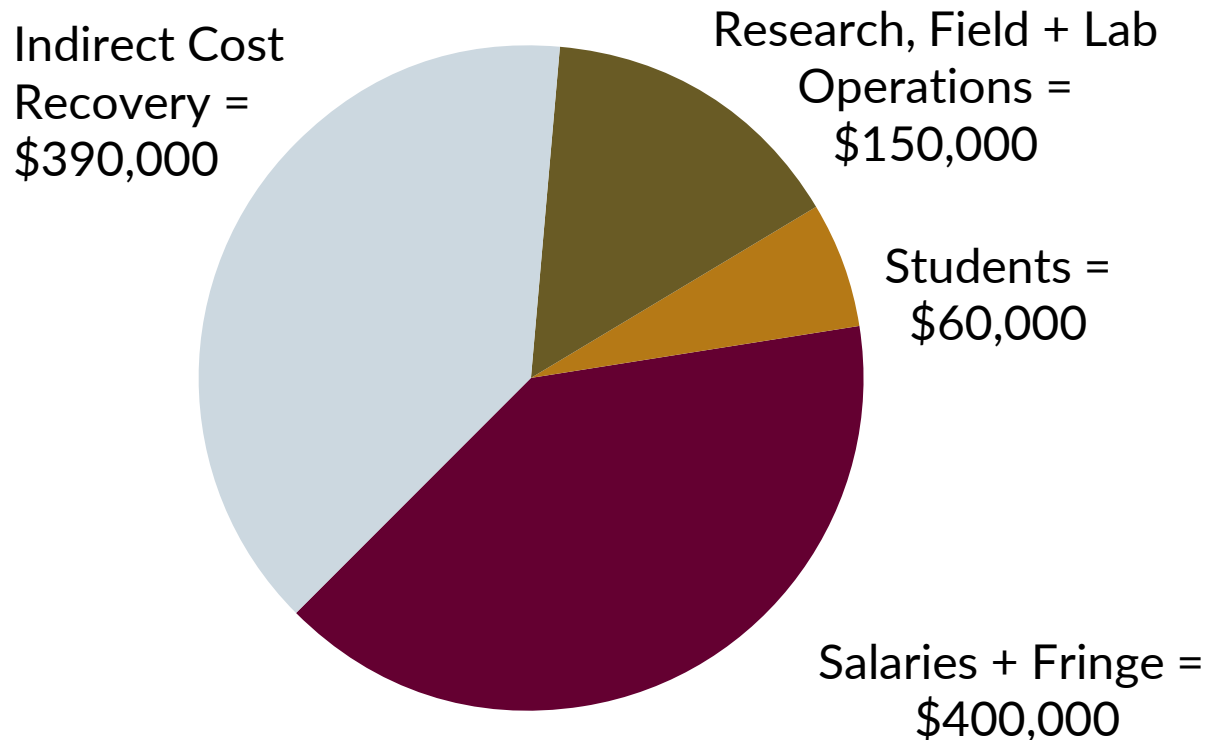
Top 6%
ATMOSPHERIC SCIENCE
24 out of 437 institutions

Top 3%
GEOLOGICAL & EARTH SCIENCES
13 out of 437 institutions

DRI BUSINESS MODEL

Project Budget Example

EXAMPLE BUDGET- \$1M Research Project



INDIRECT COST RECOVERY IS SPENT ON: *Research Support*

- Proposal Development
- Sabbaticals
- Project Cost Share
- Faculty Professional Development
- Post Doc Support
- Graduate Students & Research Immersion Internship Program

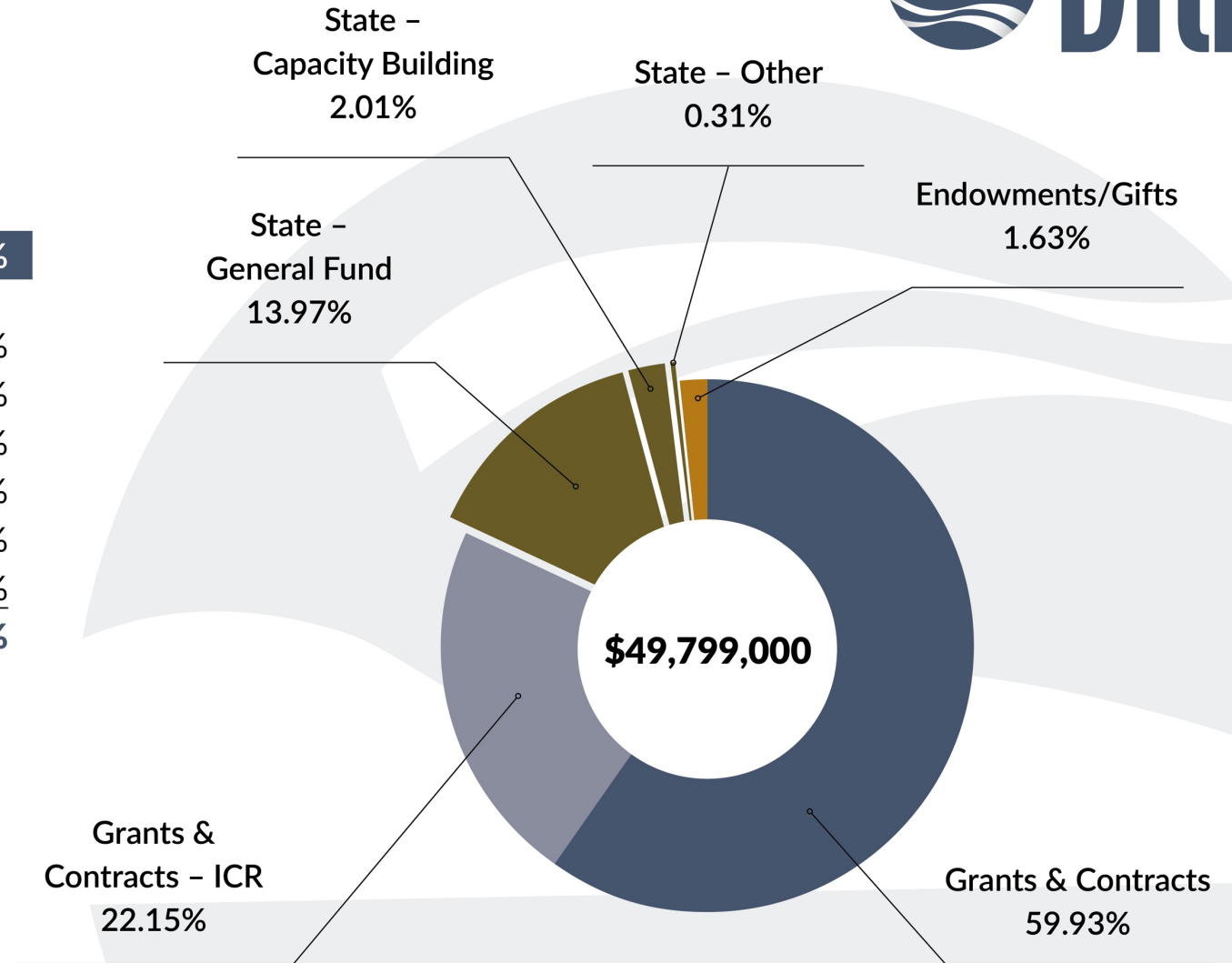
Administration

- Campus and Division Admin
- Grants Accounting
- IT and Computing
- Facilities
- Communications

DRI

TOTAL OPERATING REVENUE

FY23	REVENUE	%
Grants & Contracts	\$29,844,000	59.93%
Grants & Contracts - ICR	\$11,030,000	22.15%
State - General Fund	\$6,957,000	13.97%
State - Capacity Building	\$1,000,000	2.01%
State - Other	\$ 156,000	0.31%
Endowments/Gifts	\$812,000	1.63%
	\$49,799,000	100.00%



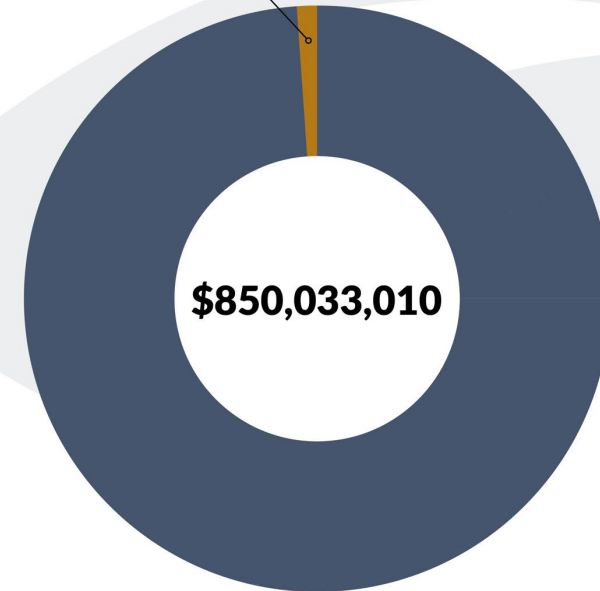
DRI

IS LESS THAN 1.5 PERCENT OF THE NSHE BUDGET

FY24 STATE	GENERAL FUND	%
NSHE - All Other	\$839,933,853	98.81%
DRI	\$9,499,157	1.12%
DRI - Cloud seeding	\$600,000	0.07%
	\$850,033,010	100.00%

- NSHE - ALL OTHER
- DRI

FY24
DRI as a % of NSHE
State General Fund
Appropriations



PREVIOUS DRI FUNDING FORMULA

IMPLEMENTED STEP CALCULATIONS	GRANTS AND CONTRACTS ACTIVITY (INCREMENTS)
12 %	\$0 - \$25,500,000
7.5 %	\$25,000,001 - \$30,000,000
6 %	\$30,000,001 - \$35,000,000
5 %	Above \$35,000,000

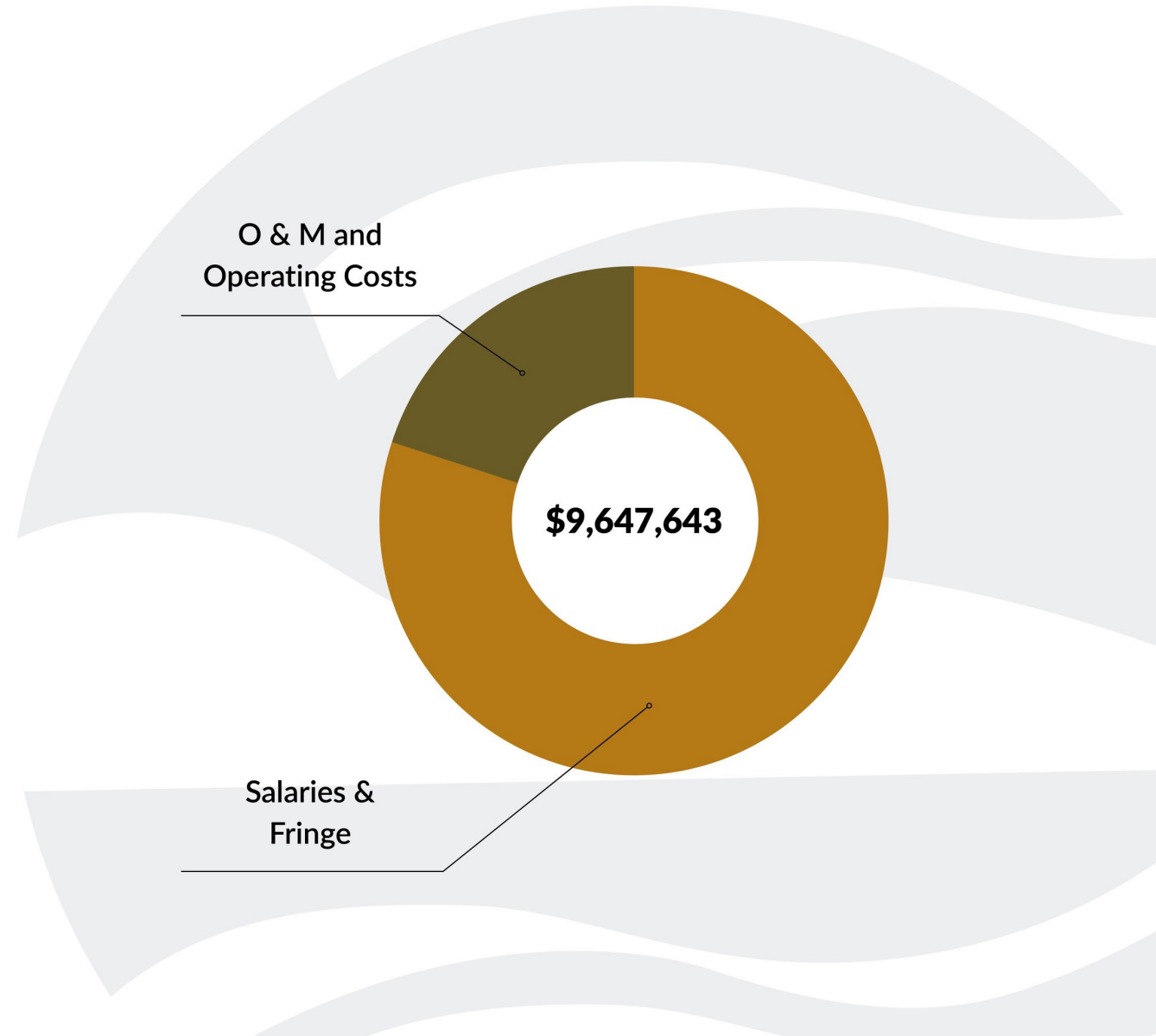
- The sliding scale that was implemented in the 2015–2017 biennium disincentivized growth.
- It effectively reduced DRI’s state funding by \$1 million annually.
- The formula cut nearly 10 state-funded positions for DRI’s facility and administrative staff, shifting the burden to research budgets.
- The Legislature reverted DRI’s funding to the base, maintenance, & enhancement model in the 2023 session, effective starting in FY24, at DRI’s request.

DRI

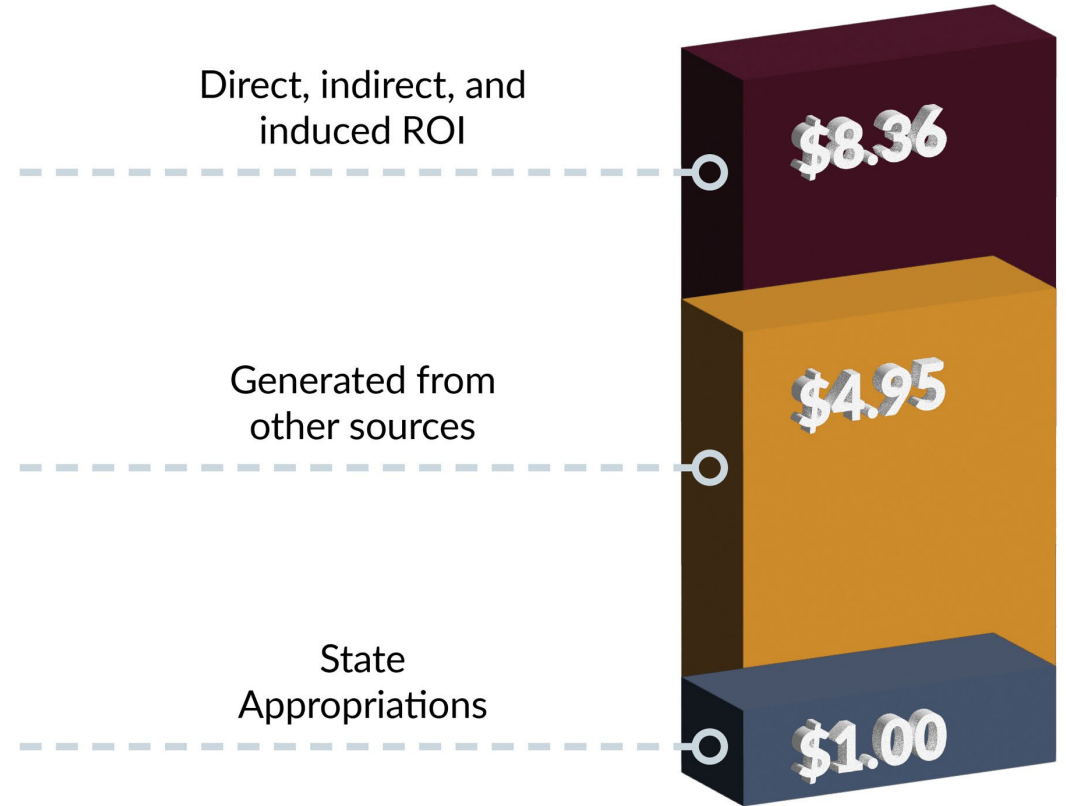
STATE FUNDING

FY24	FUNDING	%
Salaries & Fringe	\$7,675,091	80%
O & M and Operating Costs	\$1,972,552	20%
	\$9,647,643	100.00%

- SALARIES & FRINGE
- O & M AND OPERATING COSTS



ECONOMIC IMPACT & RETURN ON STATE INVESTMENT



THANK YOU



Researching the human impact on the environment
And the environment's impact on humans

