



**DRI**

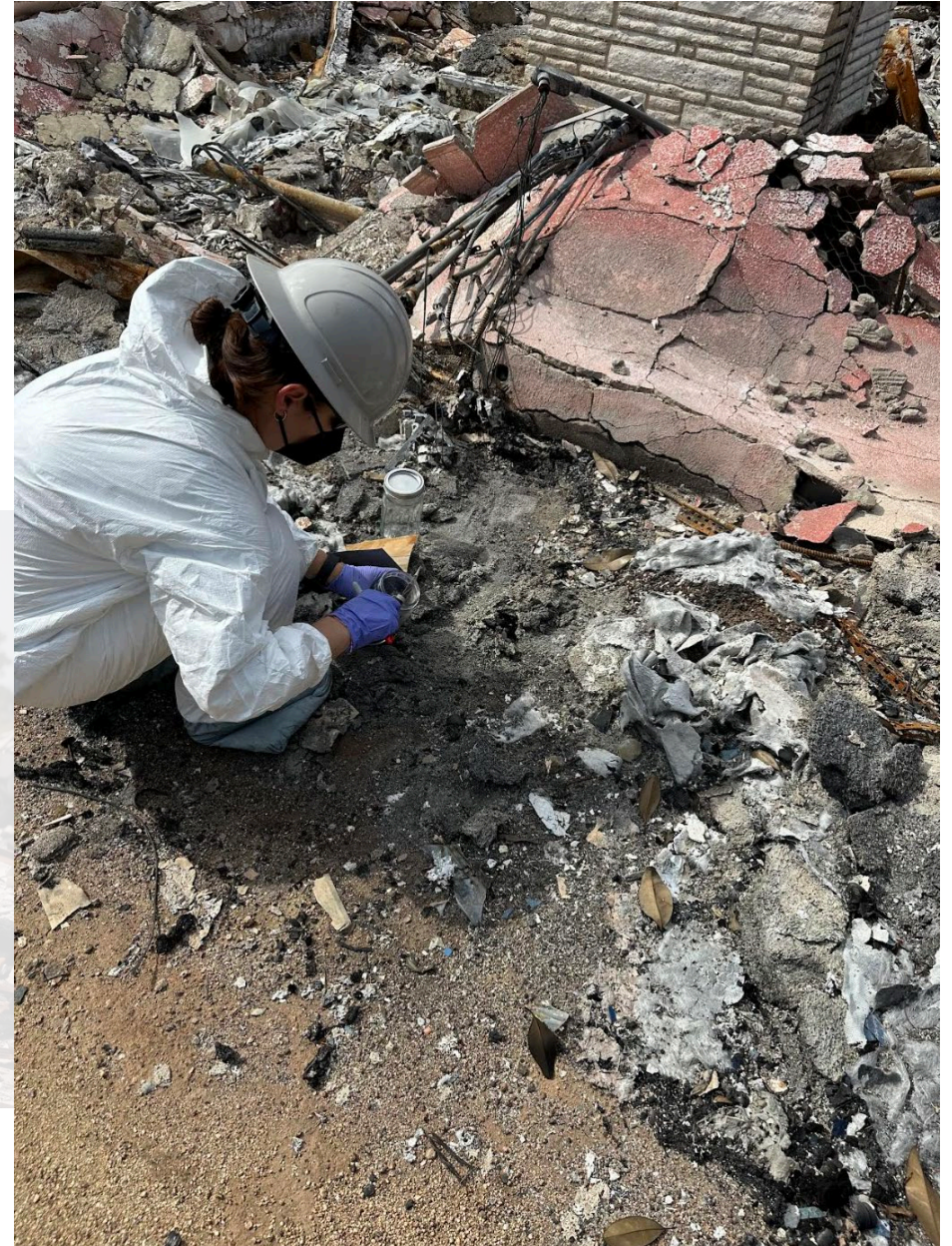
SCIENCE THAT MATTERS NOW.™



VERA  
SAMBUROVA, Ph.D.



# EXTREME WILDFIRES IN LA



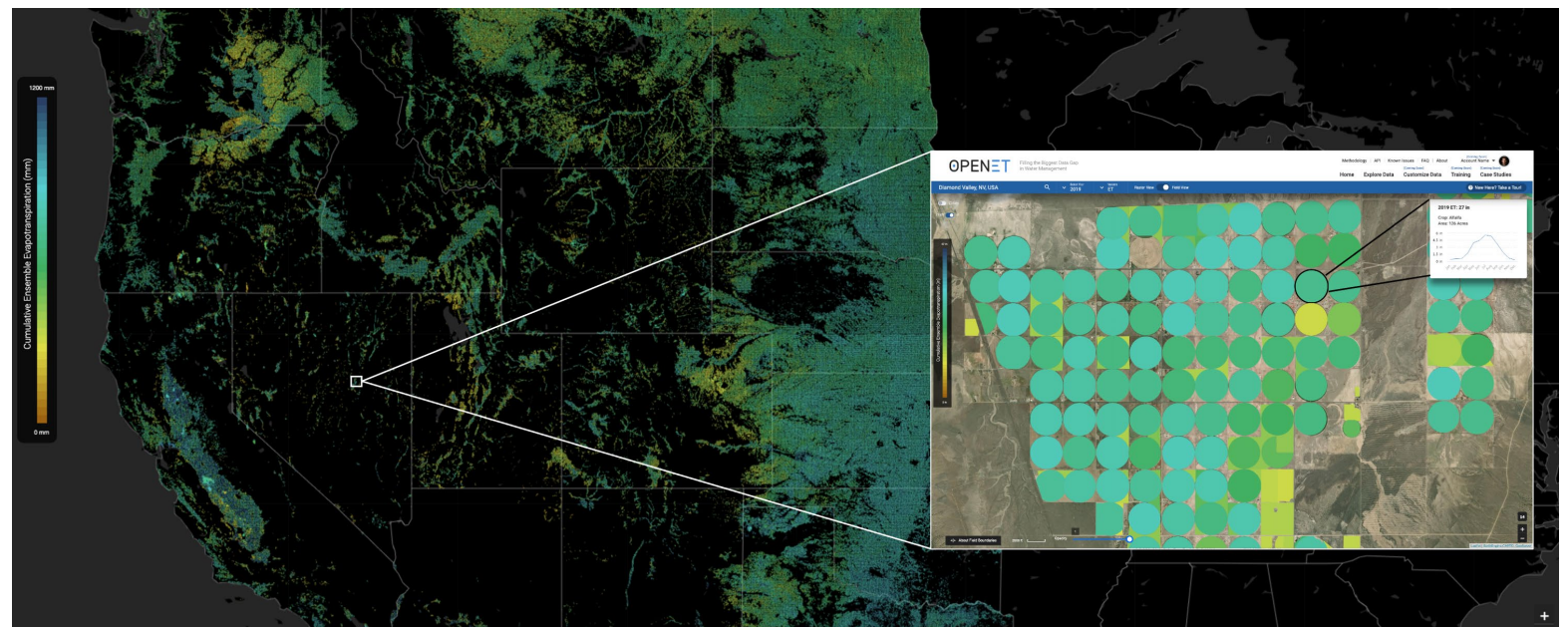
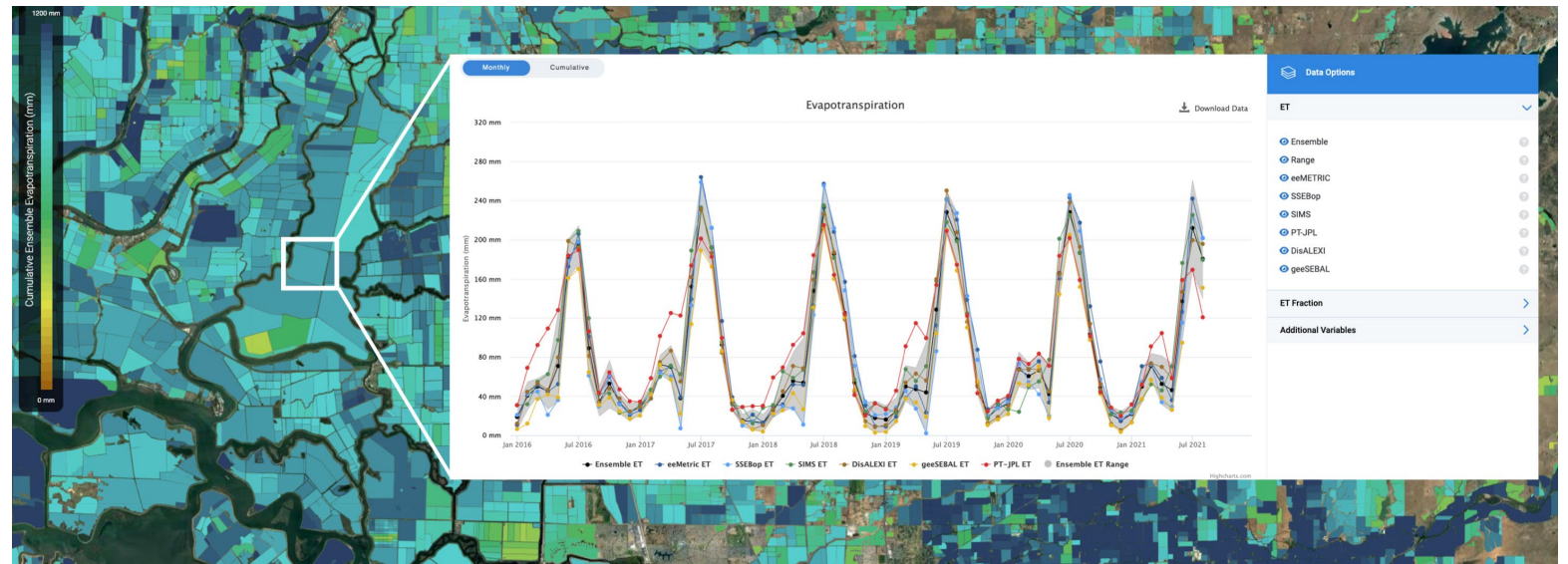
An aerial view of a city with mountains in the background, overlaid with a semi-transparent orange filter. A large airplane is visible in the sky, flying towards the viewer.

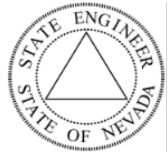
**ARIEL  
CHOINARD**  
NVHL Lead/  
CNAP Project Coordinator

Co-creating  
heat-adapted  
communities for  
a resilient future.



# OpenET





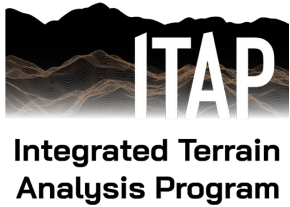
# THE NEVADA WATER INITIATIVE



# CL<sup>U</sup>UD SEEDING PROGRAM

- Used for decades in the western U.S. to enhance water supplies.
- Conducted under real-time supervision and only within established weather parameters.
- Generated 40,674 acre-feet of water in winter of 2024–2025 — enough water for 100,000 Nevada homes at a cost of \$14.75 per acre-foot.





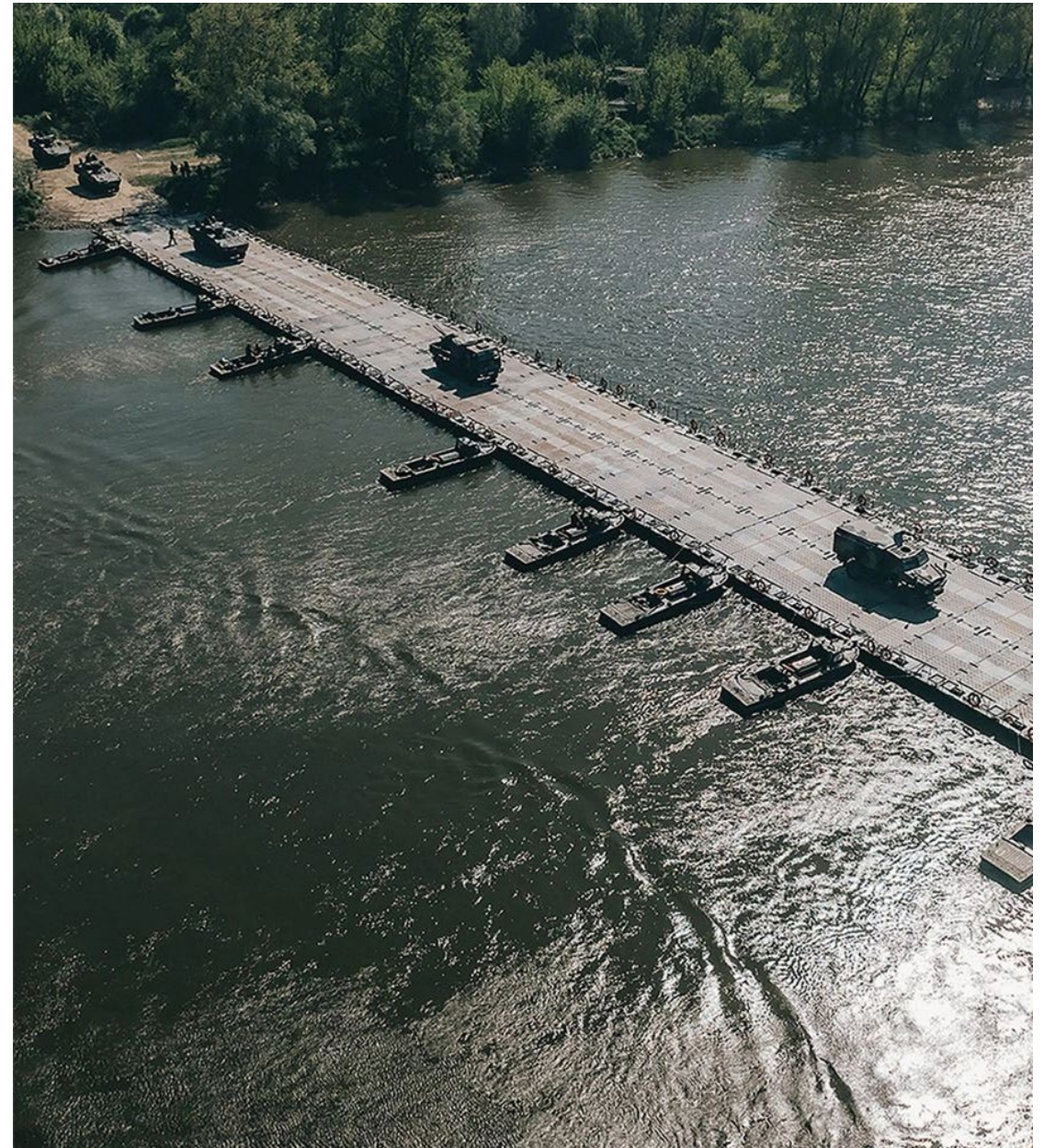
# CROSSING SUPPORT

## *Sponsor Needs*

How can the U.S. military gain strategic cross-country mobility advantages in regions with high density of wet gap crossings?

## *ITAP Solution*

- Validate mobility prediction tools used by the U.S. Army in river-adjacent settings.
- Refine soil strength algorithms using AI/ML.
- Expand the model to handle cold-region and/or dynamic environments.



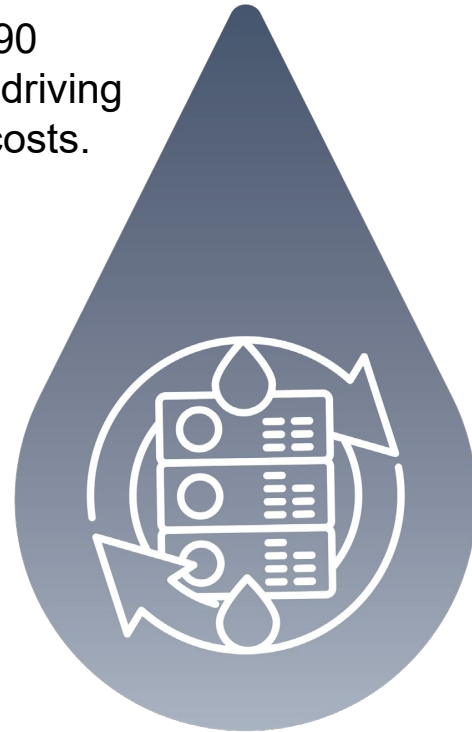
# NEVADA'S EVOLUTION

## Impact of 12 Proposed Data Centers

### Into Data Center Hotspot

Fuel load growth of 25,590 gigawatt-hours by 2033, driving resource demands and costs.

Data center water demand is driven directly by cooling and indirectly through electricity generation.



NV Energy estimates the energy demand will be 5,900 megawatts. This is about 2.8 times the capacity of Hoover Dam (2,080 megawatts).



The water needed annually for cooling under the medium efficiency scenario, is equivalent to the drinking water of more than 25M U.S. adults.



# UNDERGRADUATE

## RESEARCH IMMERSION INTERNSHIP PROGRAM

**102** semester-long internship opportunities created since 2021  
*(including 2026's spring semester interns)*

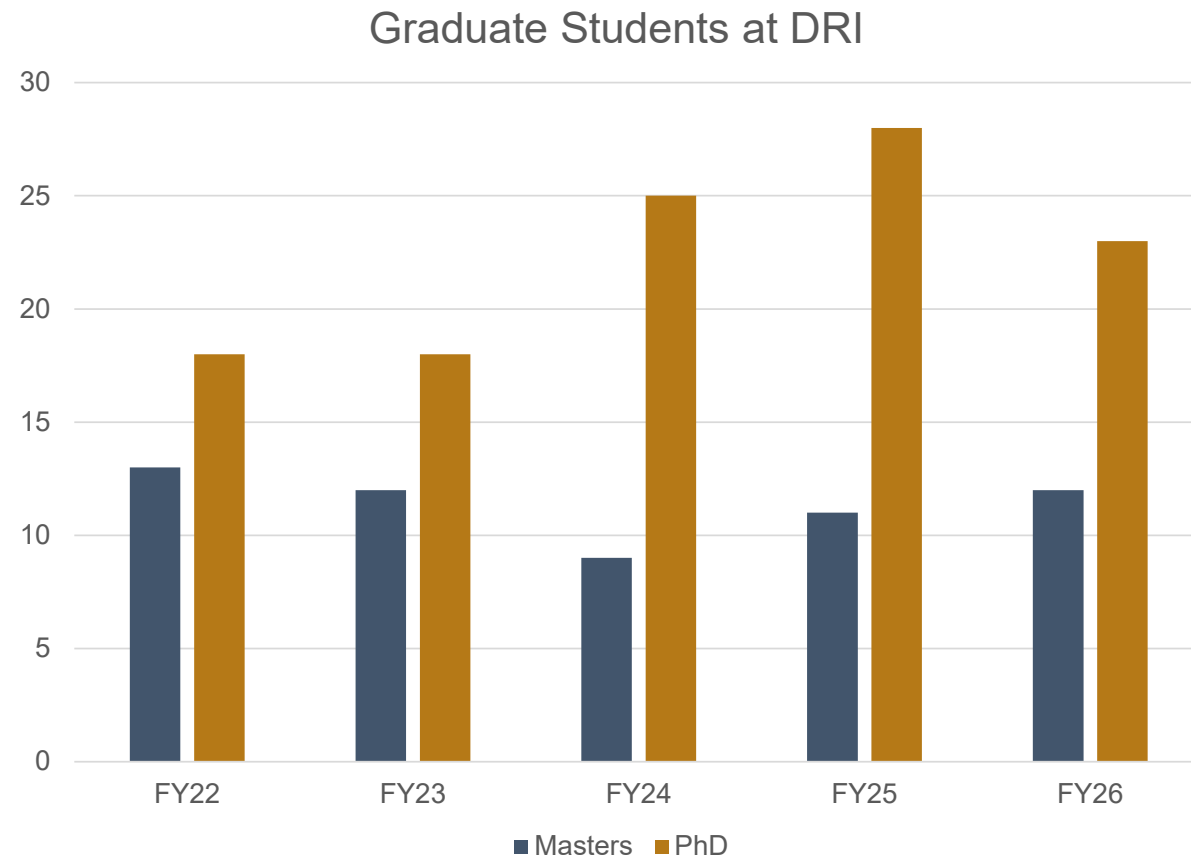
**59%** first-generation college students

**92%** increased confidence in working in STEM fields

**92%** increased confidence solving problems



# SUPPORTING STUDENTS





---

PreK-12 STEM Education  
Educator Professional Development  
Workforce Development  
Community Outreach

*New \$2.7 Million Grant to Develop AI and  
Computer Science Education*



# 2025 IMPACT

---



**638**

Educators  
Trained

**37,763**

Community  
Members Engaged

**43,382**

K-12th Students  
Engaged

**165**

Undergraduate  
Interns



# NEVADA ROBOTICS PROGRAM

*Our vision is a Nevada education system where all students have early and equal access to engaging and quality computer science instruction to build a foundation for their success in STEM classes, majors, and jobs.*

## Statewide Initiatives

- PreK – 12 Educator Professional Development Workshops - robots and drones
- Robot and Drone Lending Libraries in Reno, Las Vegas, Elko, and Mesquite
- Robotics and Drone Family Engagement Events
- Federal Earmark Supporting Drone Training & Competitions.



## NSHE Project Partners

- UNR
- TMCC
- GBC

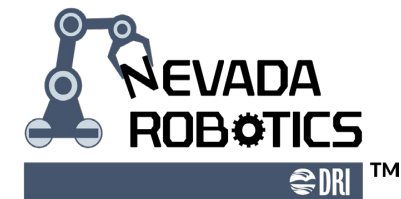
# STATEWIDE IMPACTS

## 2025 Overall Impacts

- **30,500** people reached
  - **625** teachers trained
  - **25,680** students reached & **27,000** books gifted
  - **4,000+** community members
- **121** events
  - **72** outreach and presentations
  - **49** teacher workshops
  - **8** drone competitions

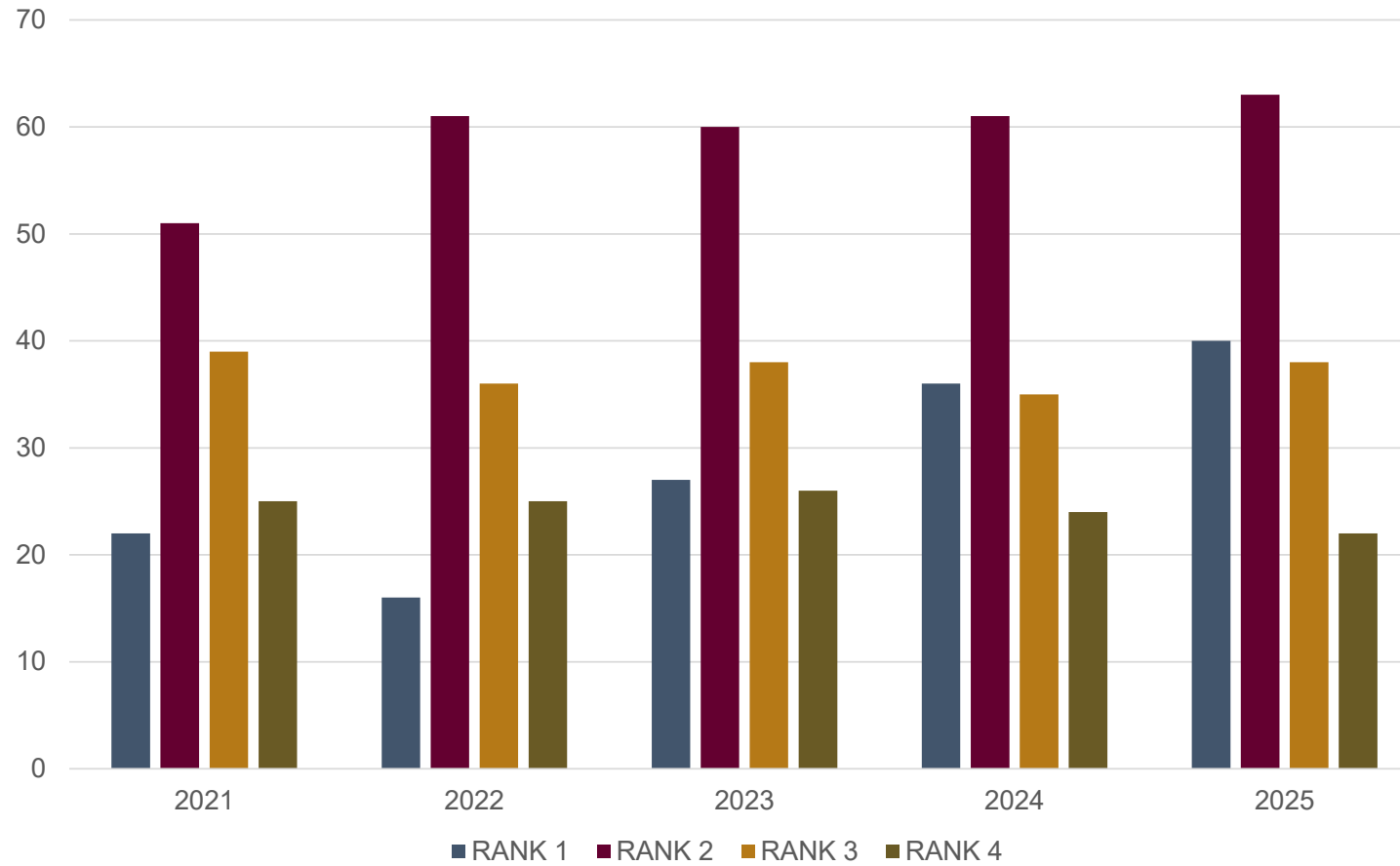
## 2025 Rural Impacts

- **9,835** students reached
- **195** teachers trained
- **12,115** books distributed
- **33** total events held
  - **17** teacher workshops
  - **9** days of summer camp
  - **6** drone events

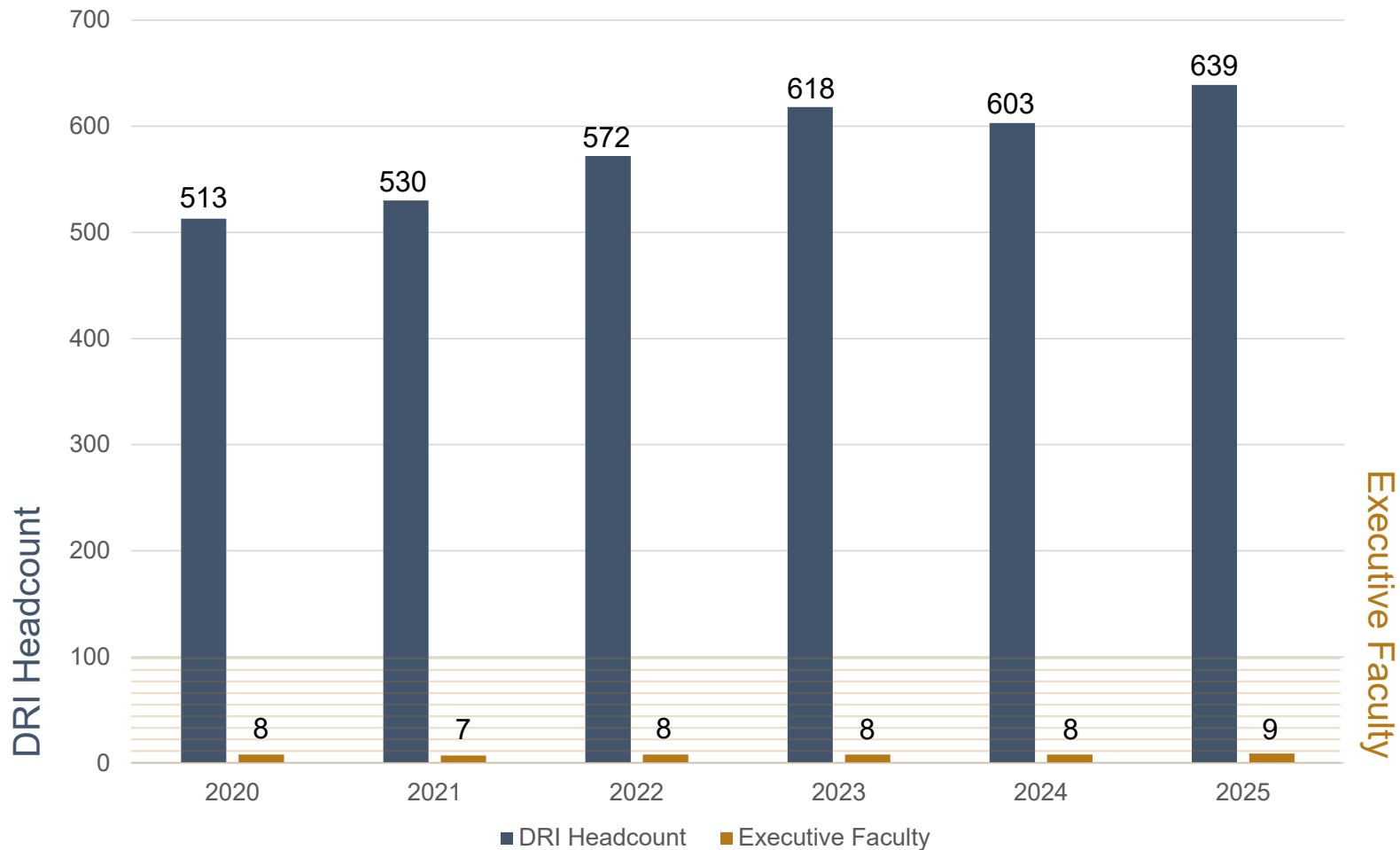


# DEMOGRAPHICS

## RESEARCH PERSONNEL BY RANK



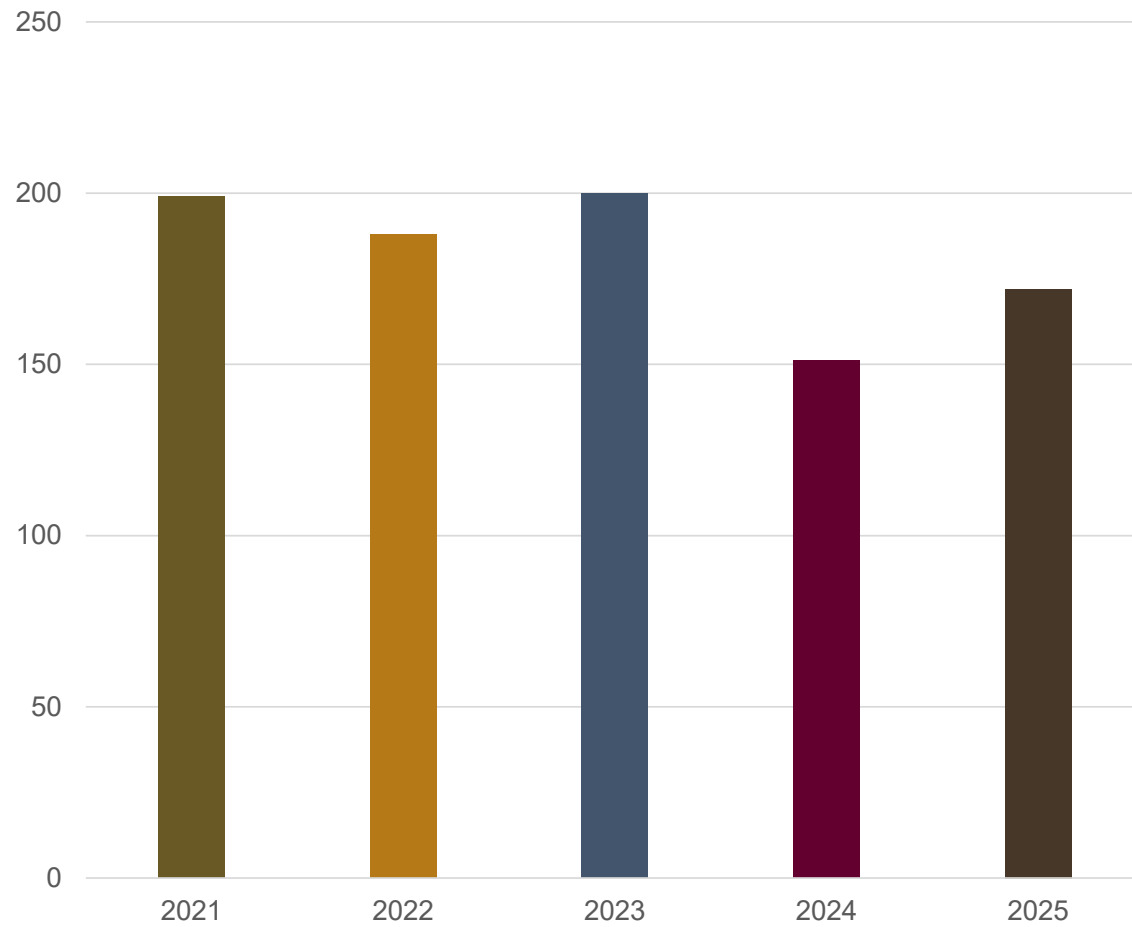
# DRI HEADCOUNT VS. EXECUTIVE FACULTY TOTALS FY20–FY25



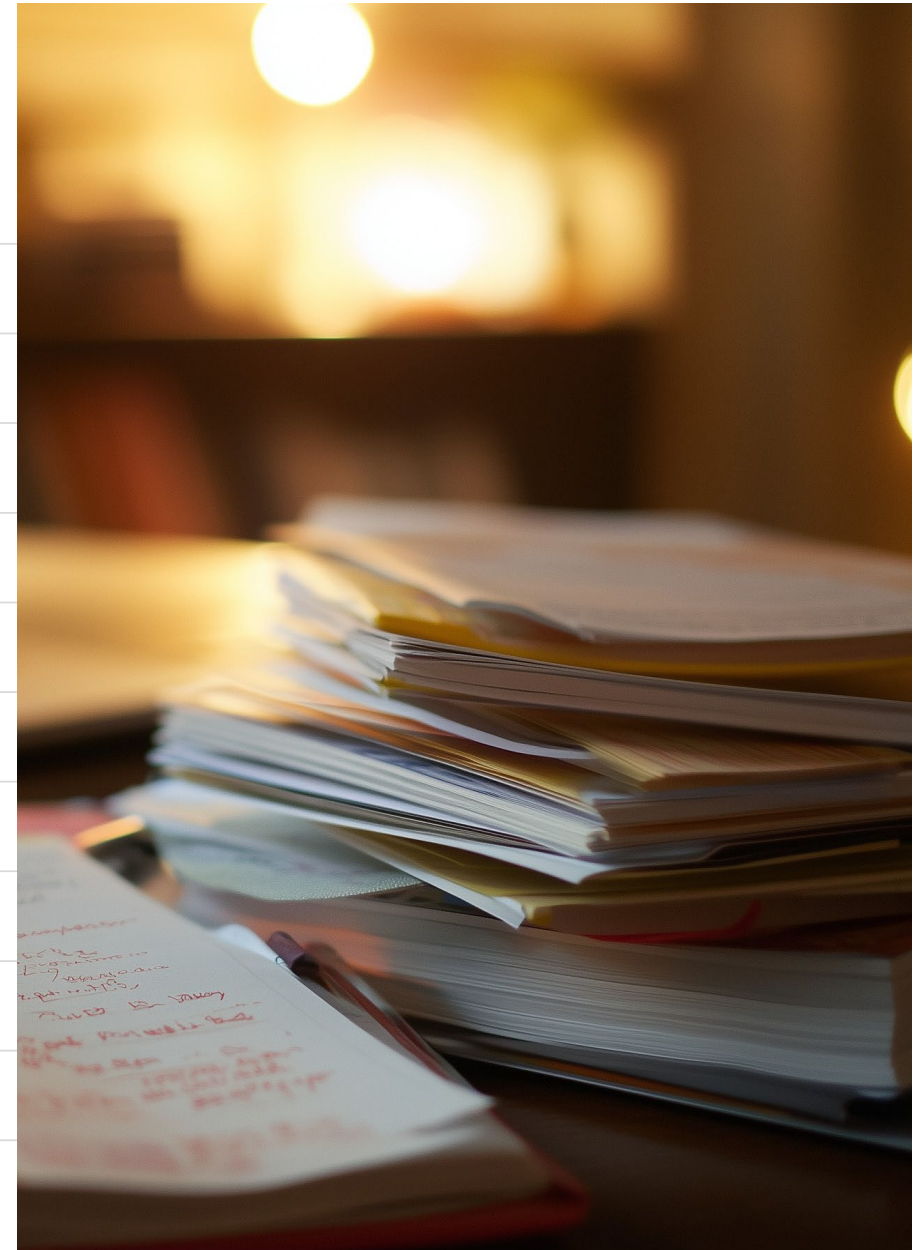
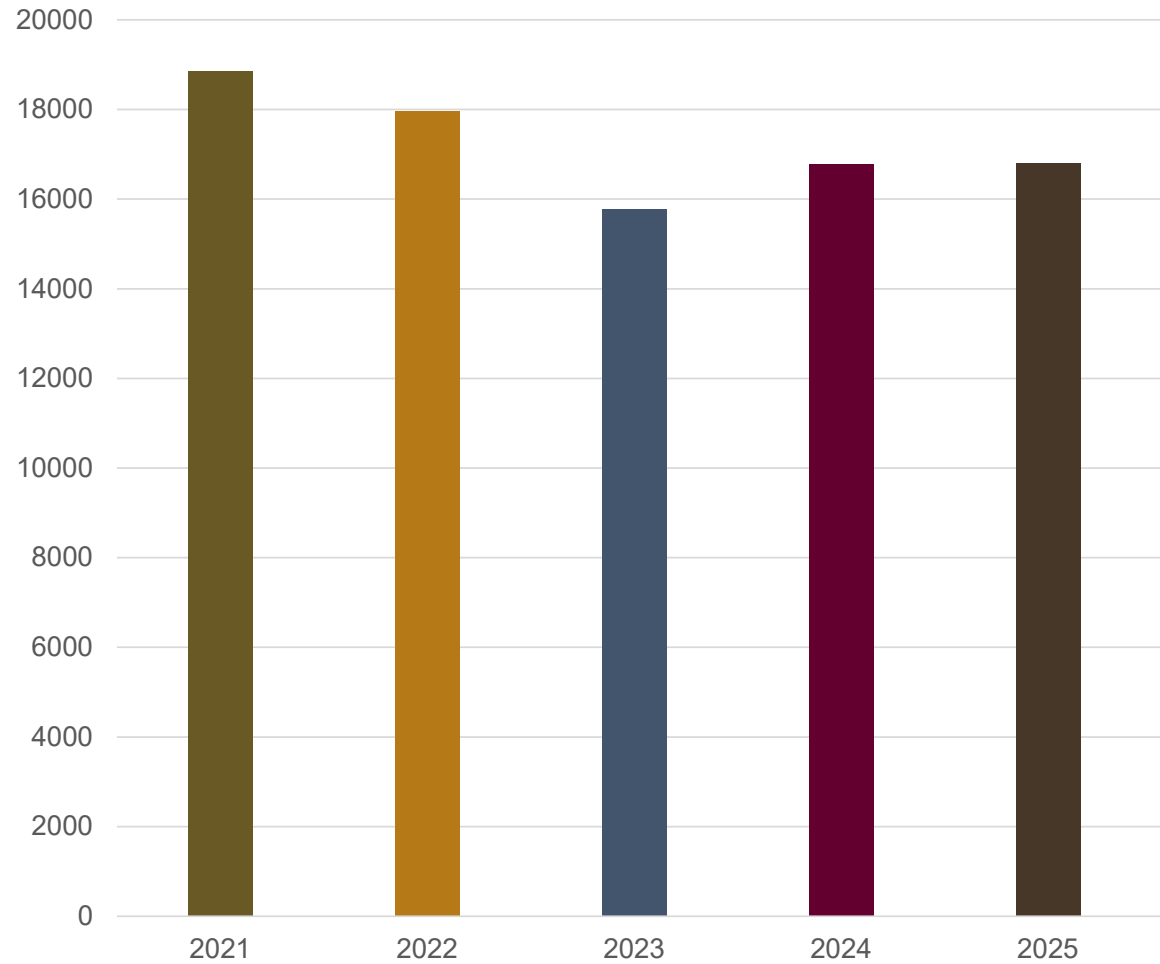
# AWARD REVENUE TRENDS



# DRI PUBLICATIONS



# RESEARCH CITATIONS



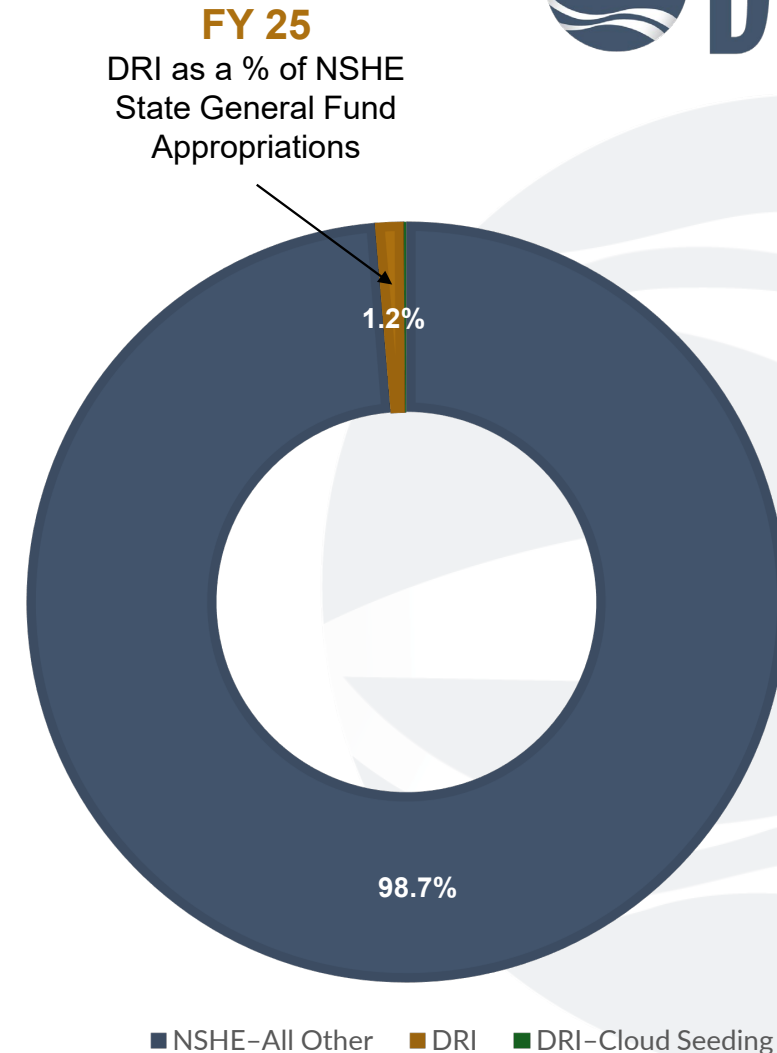
# DRI

IS LESS THAN 1.5 PERCENT  
OF THE NSHE BUDGET



FY25 STATE	GENERAL FUND	%
NSHE - All Other	\$857,086,058	98.7%
DRI	\$10,206,830	1.2%
DRI – Cloud Seeding	\$600,000	0.1%
<b>TOTAL</b>	<b>\$867,892,888</b>	<b>100%</b>

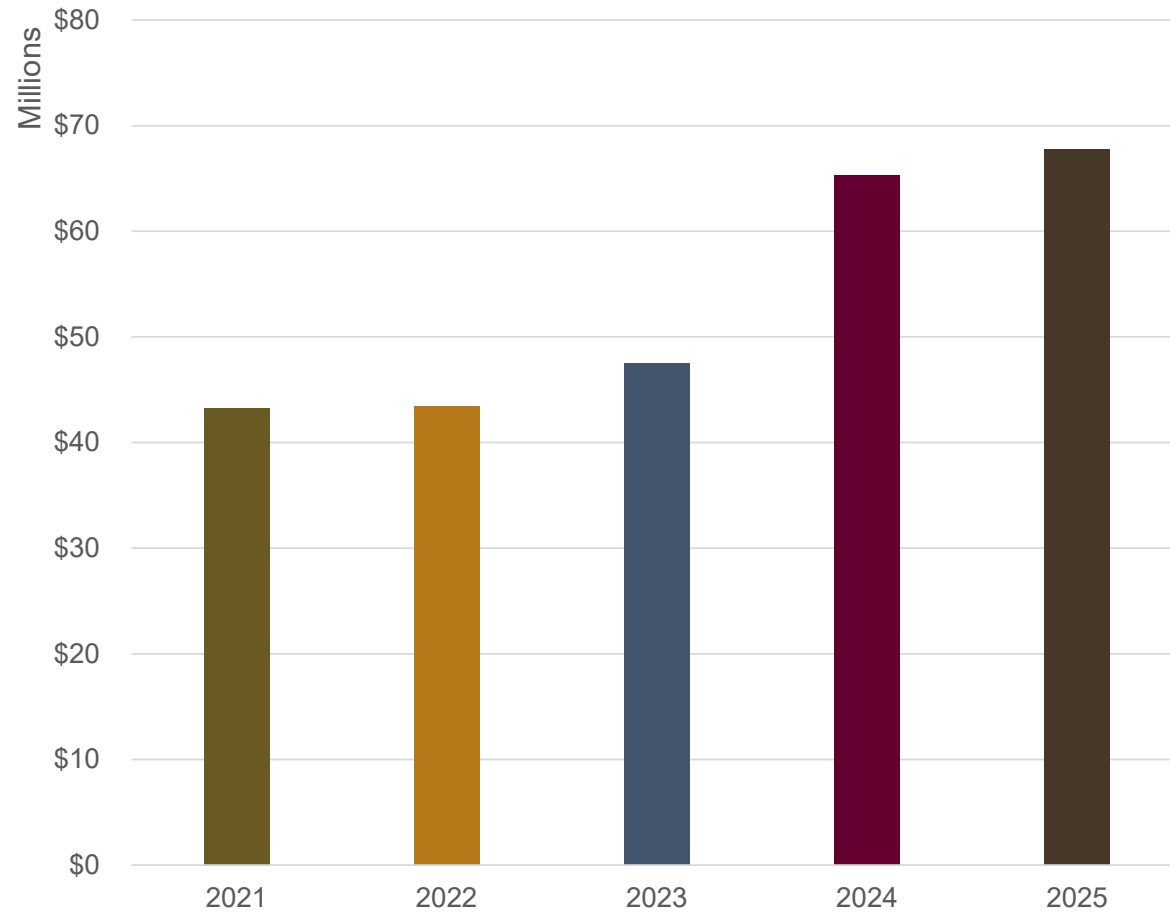
- NSHE–All Other
- DRI
- DRI–Cloud Seeding



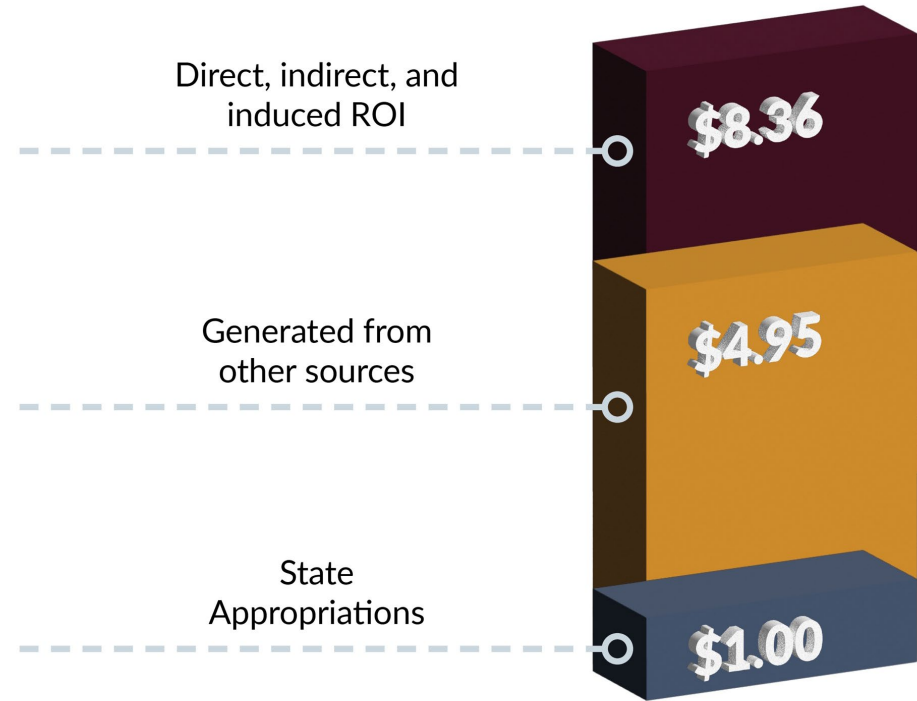
# FY25 GRANT & CONTRACT AWARDS



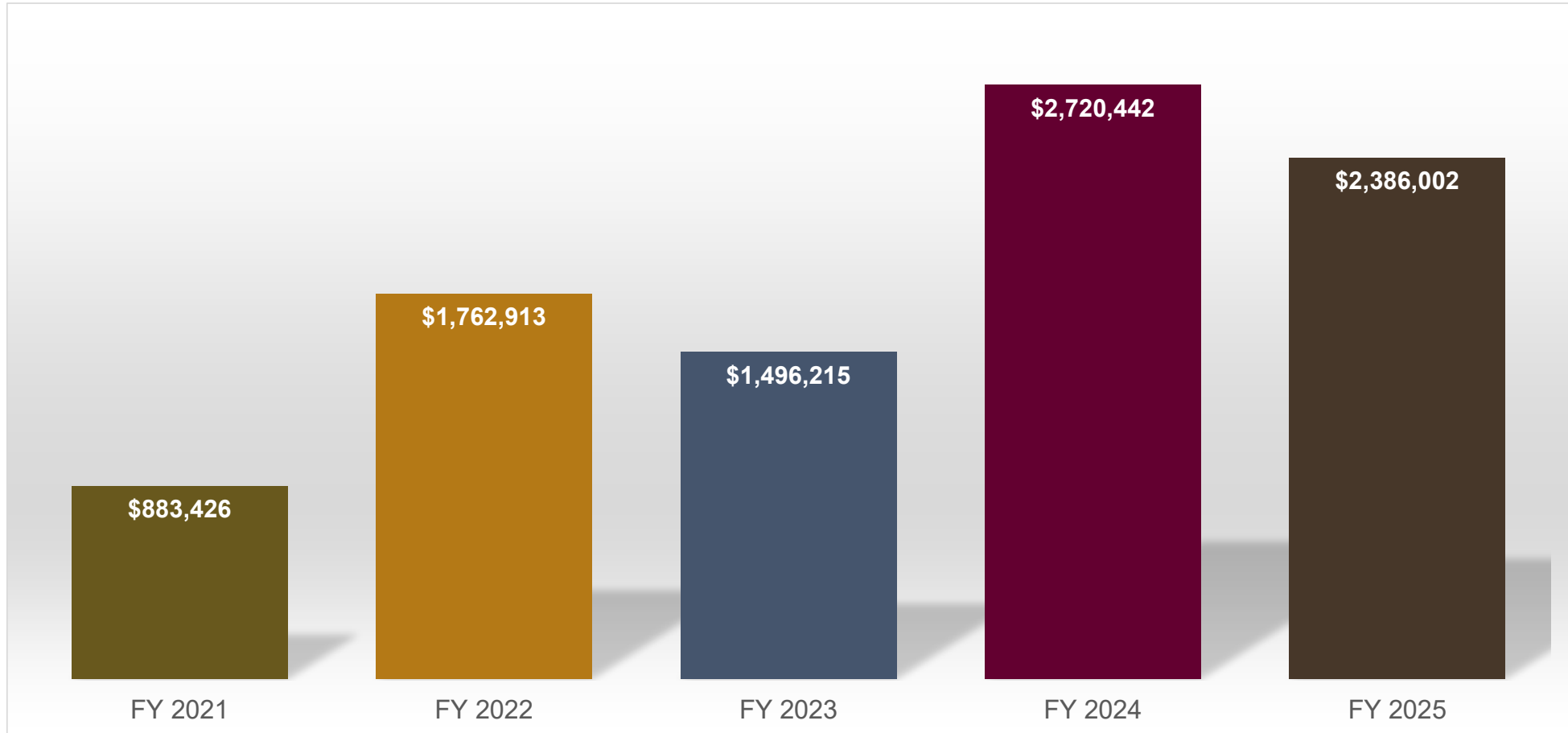
# GRANT & CONTRACT AWARDS



# ECONOMIC IMPACT & RETURN ON STATE INVESTMENT

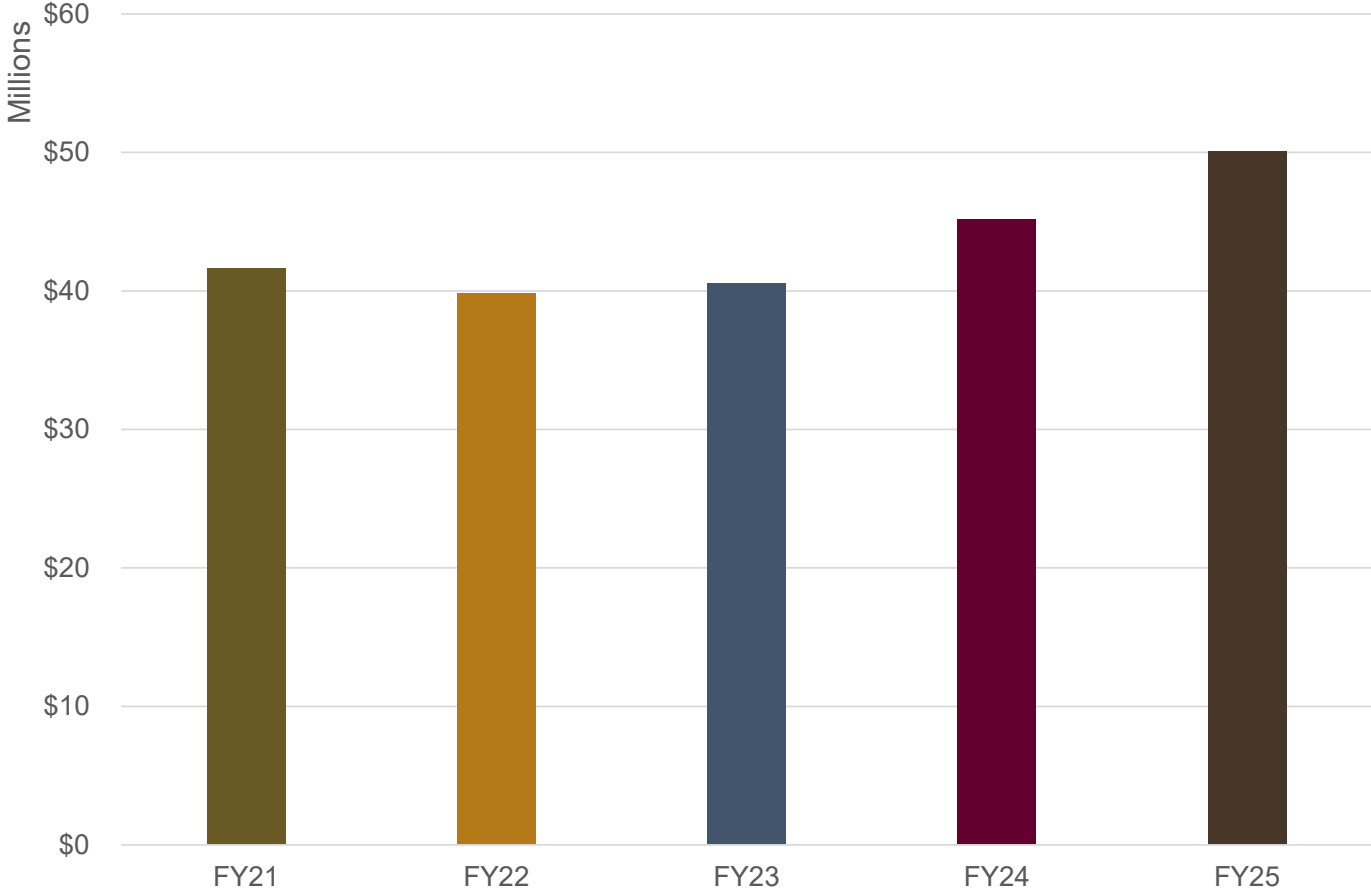


# RECENT FUNDRAISING ACTIVITY



# 5-YEAR ENDOWMENT MARKET VALUE HISTORY

*Market value of all DRI endowments for the periods ending on June 30.*





**MAY THE SCIENCE BE WITH YOU**

**DRI**

**FRIDAY, MAY 1<sup>ST</sup>, 2026**





NSF NV EPSCOR PROJECT

**TO REDUCE WILDFIRE RISK  
TO PEOPLE, INFRASTRUCTURE,  
AND SAGEBRUSH LANDSCAPES  
ACROSS NEVADA AND  
THE INTERMOUNTAIN WEST.**

Thank you



Researching the human impact on the environment  
and the environment's impact on humans.

