



# **MGM**

# **College Opportunity Program**

# **Update**

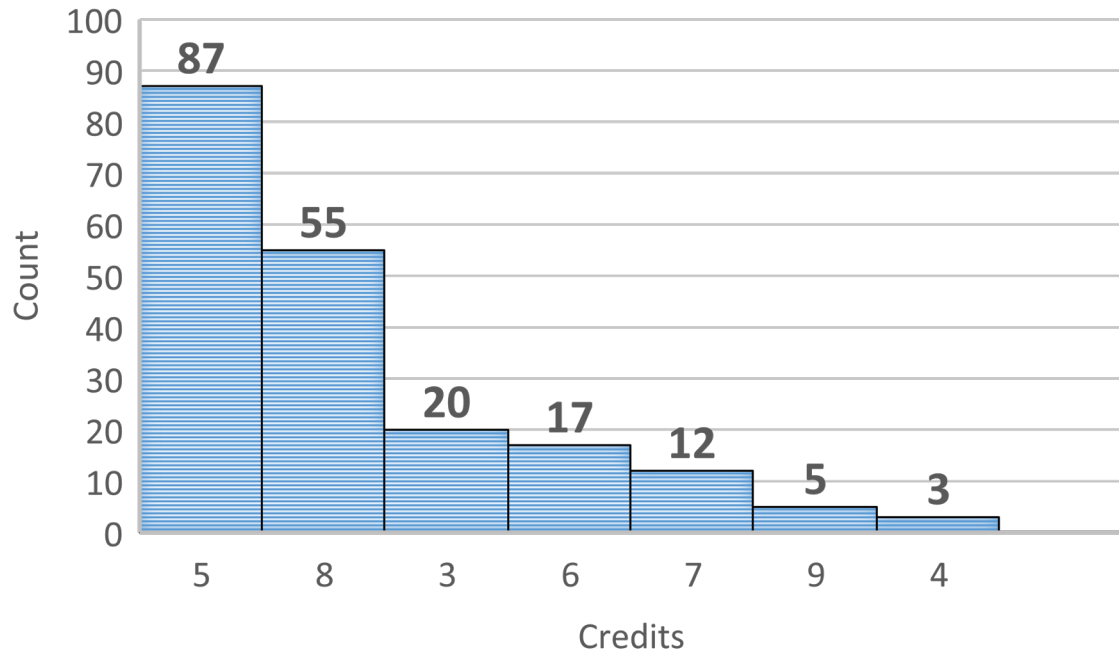


**Board of Regents Meeting**  
**March 2020**

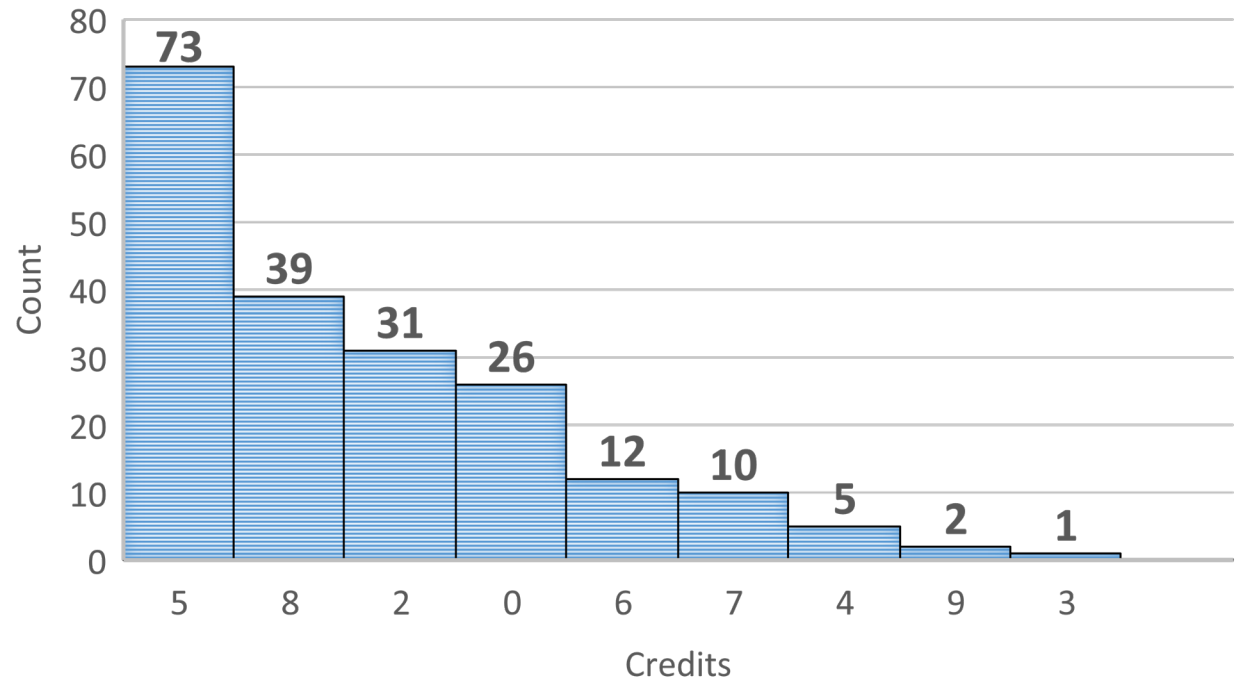
**Nate Mackinnon, Vice Chancellor for Community Colleges**

# MGM COP Fall 2019 Attempted vs Credit Earned Undergraduate

## CREDITS ATTEMPTED

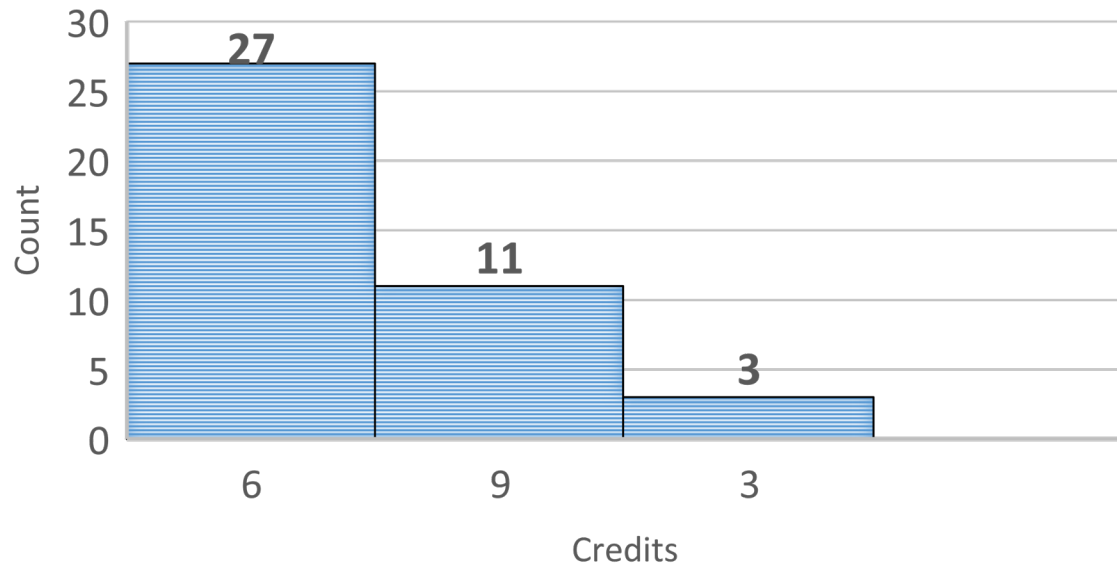


## CREDITS EARNED

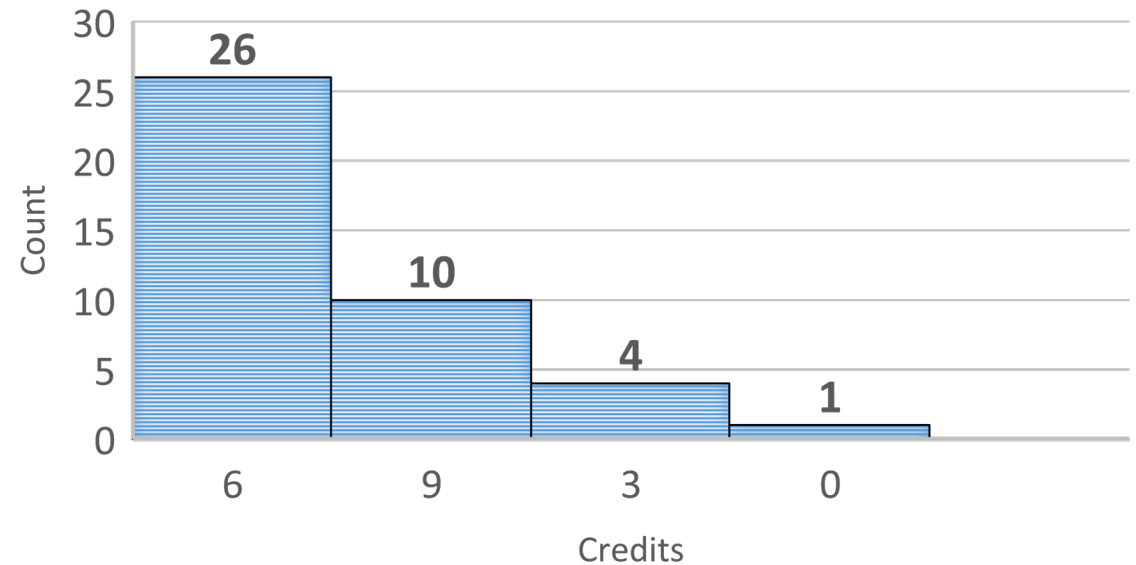


# MGM COP Fall 2019 Attempted vs Credit Earned Graduate

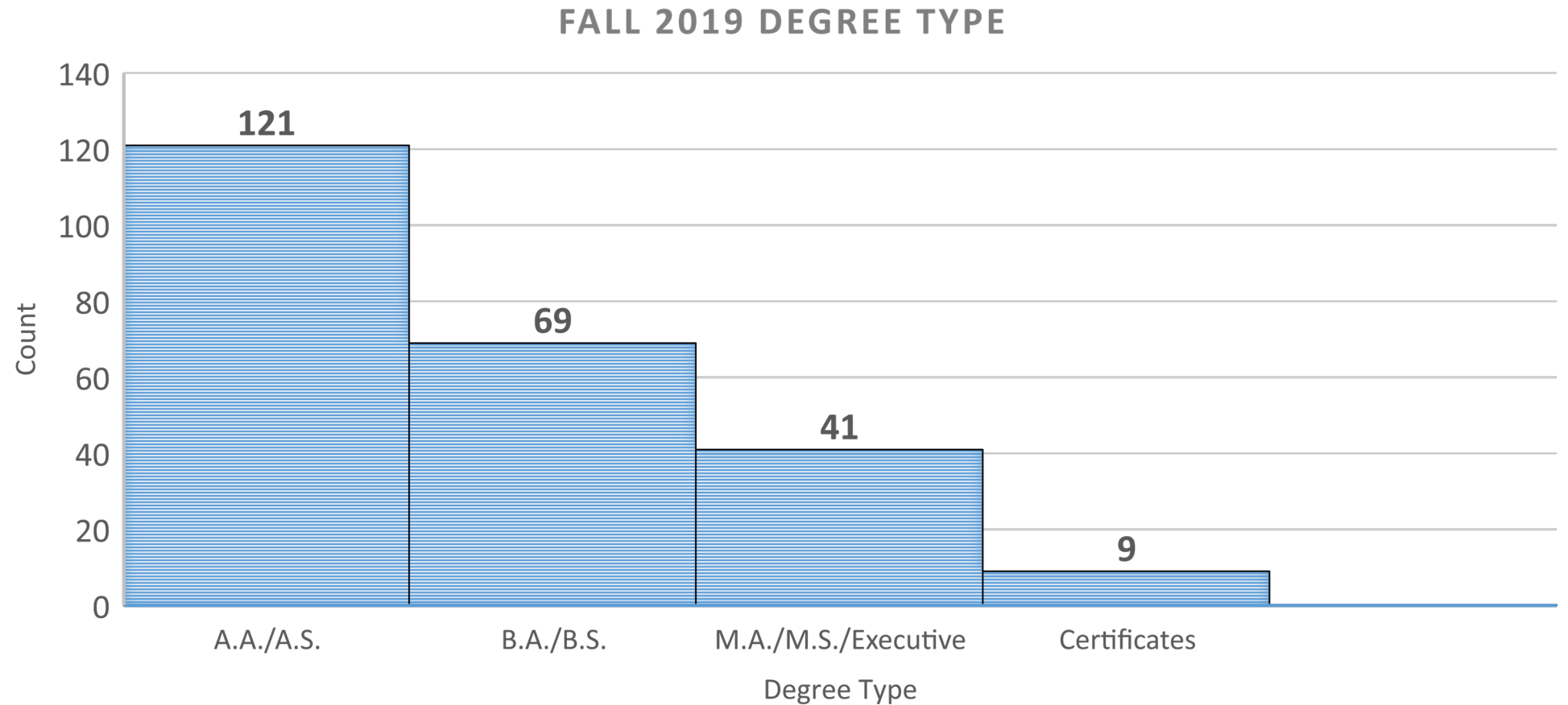
### CREDITS ATTEMPTED



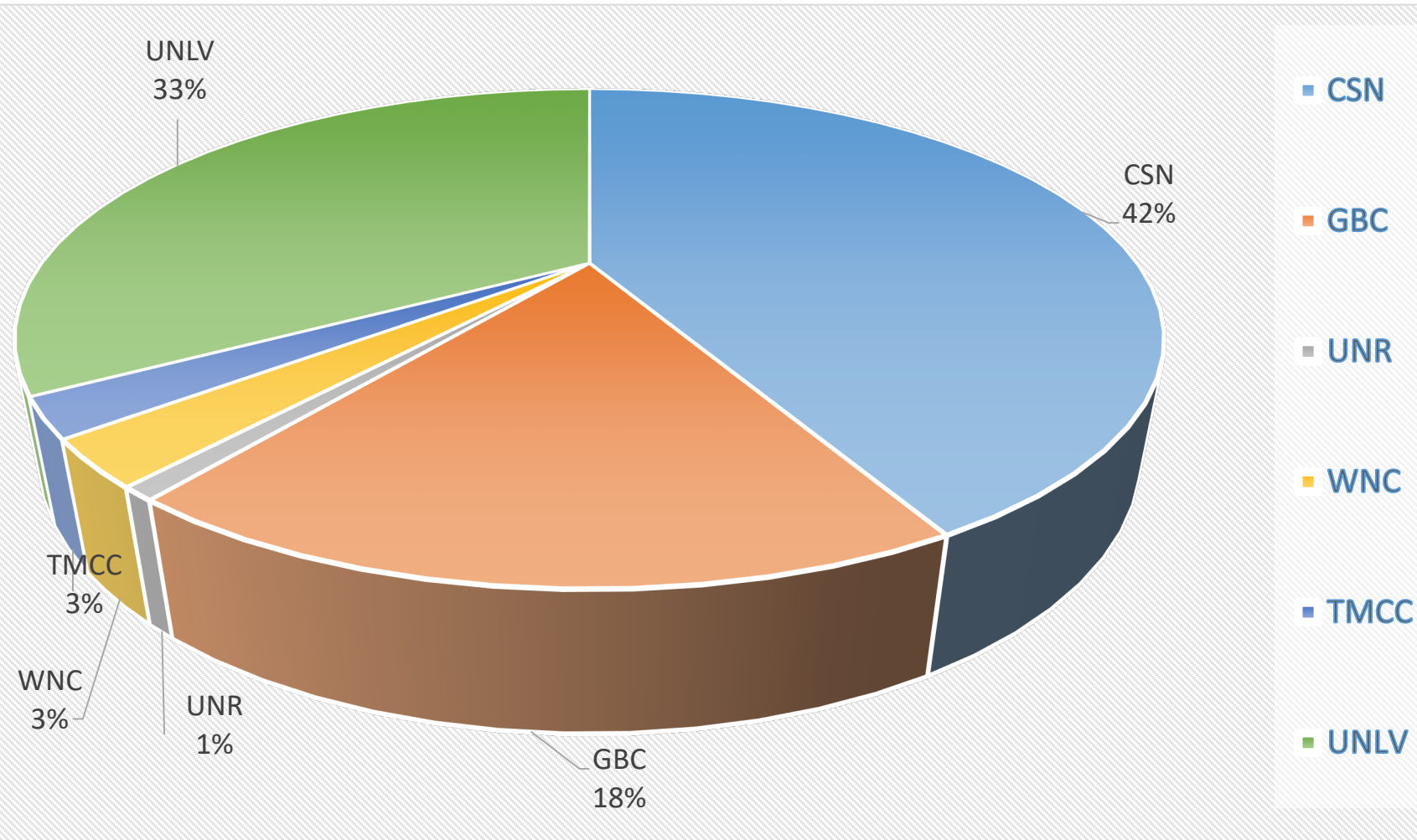
### CREDITS EARNED



# MGM COP Fall 2019 Degree Type



# MGM COP Fall 2019 Enrollment Update by Institutions



Institution	Count	Percentage
CSN	101	42.1
GBC	44	18.3
UNR	2	0.8
TMCC	6	2.5
UNLV	80	33.3
WNC	7	2.9
Total	240	100

# MGM COP Enrollment Update by Institutions

## College of Southern Nevada (CSN):

### **MGM COP Applications**

Fall 2019: 344\*

Spring 2020: 81

### **MGM COP Employees Enrolled**

Fall 2019: 104

Spring 2020: 111

## Great Basin College (GBC):

### **MGM COP Applications**

Fall 2019: 90

Spring 2020: 11

### **MGM COP Employees Enrolled**

Fall 2019: 44

Spring 2020: 37

# MGM COP Enrollment Update by Institutions

## Truckee Meadows Community College (TMCC):

### **MGM COP Applications**

Fall 2019: 30

Spring 2020: 10

### **MGM COP Employees Enrolled**

Fall 2019: 6

Spring 2020: 18

## University of Nevada, Las Vegas (UNLV):

### **MGM COP Applications**

Fall 2019: 176

Spring 2020: 17

### **MGM COP Employees Enrolled**

Fall 2019: 80

Spring 2020: 89

# MGM COP Enrollment Update by Institutions

## University of Nevada, Reno (UNR):

### **MGM COP Applications**

Fall 2019: 3

Spring 2020: 0

### **MGM COP Employees Enrolled**

Fall 2019: 2

Spring 2020: 2

## Western Nevada College (WNC):

### **MGM COP Applications**

Fall 2019: 9

Spring 2020: 0

### **MGM COP Employees Enrolled**

Fall 2019: 8

Spring 2020: 3



# NSHE Decision Tree Updates

- The “**Decision Tree**” went live on the NSHE’s website on **September 9, 2019**.
- **123** undecided MGM COP employees selected the option “**Help Me Decide**” on the NSHE “**Decision Tree**” questionnaire.
- MGM COP Employees listed the following “**programs of interest not offered**” on the NSHE “**Decision Tree**” questionnaire:
  - Event Planning and Management
  - Transportation and Logistics
  - BA/BS: Business Administration,
  - Cyber Security, MS and Executive MBA

# MGM COP Fiscal Impact

## Fall 2019

	<b>Program Revenue</b>	<b>Program Expenses</b>	<b>Net Program Impact</b>
<b>CSN</b>	\$85,287	\$30,449	\$54,838
<b>GBC</b>	\$33,505	\$16,545	\$16,960
<b>TMCC</b>	\$4,386	\$1,289	\$3,097
<b>WNC</b>	\$6,387	\$1,822	\$4,565
<b>UNLV</b>	\$250,219	\$108,016	\$142,203
<b>UNR</b>	\$5,623	\$4,830	\$793
<b>NSHE-SA</b>	\$0	\$5,000	-\$5,000
<b>TOTAL</b>	<b>\$385,406</b>	<b>\$167,951</b>	<b>\$217,456</b>

# MGM COP Direct WSCH Impact

## Fall 2019

	Lower Division WSCH	Upper Division WSCH	Master's WSCH	Total WSCH
<b>CSN</b>	<b>821.00</b>	<b>0.00</b>	<b>-</b>	<b>821.00</b>
<b>GBC</b>	<b>66.00</b>	<b>60.00</b>	<b>-</b>	<b>126.00</b>
<b>TMCC</b>	<b>3.00</b>	<b>0.00</b>	<b>-</b>	<b>3.00</b>
<b>WNC</b>	<b>25.00</b>	<b>33.00</b>	<b>-</b>	<b>58.00</b>
<b>UNLV</b>	<b>160.50</b>	<b>112.20</b>	<b>382.80</b>	<b>655.50</b>
<b>UNR</b>	<b>0.00</b>	<b>0.00</b>	<b>0.00</b>	<b>0.00</b>
<b>TOTAL</b>	<b>1,075.50</b>	<b>205.20</b>	<b>382.80</b>	<b>1,663.50</b>

# MGM COP Indirect\* WSCH Impact

## Fall 2019

	Lower Division WSCH	Upper Division WSCH	Master's WSCH	Total WSCH
<b>CSN</b>	<b>169.00</b>	<b>0.00</b>	<b>-</b>	<b>169.00</b>
<b>UNLV</b>	<b>42.50</b>	<b>79.20</b>	<b>0.00</b>	<b>121.70</b>
<b>TOTAL</b>	<b>211.50</b>	<b>79.20</b>	<b>0.00</b>	<b>290.70</b>

\*Represents students enrolled in Fall 2019 who originally were approved to participate in the COP, but opted out for various reasons (i.e. participating in an in-person degree program)

# Moving Forward

- Pilot through 2020-21 academic year
- New Online Programs
  - UNLV: BA, Hospitality Management
- Summer Session
- Fall 2020 Recruitment Events
- Providing Online Support and Resources

# QUESTIONS