

# **Funding to Mission?**

**A Carnegie-based view on funding adequacy  
for NSHE institutions**

**Chancellor John V. White**

**May 25, 2017**

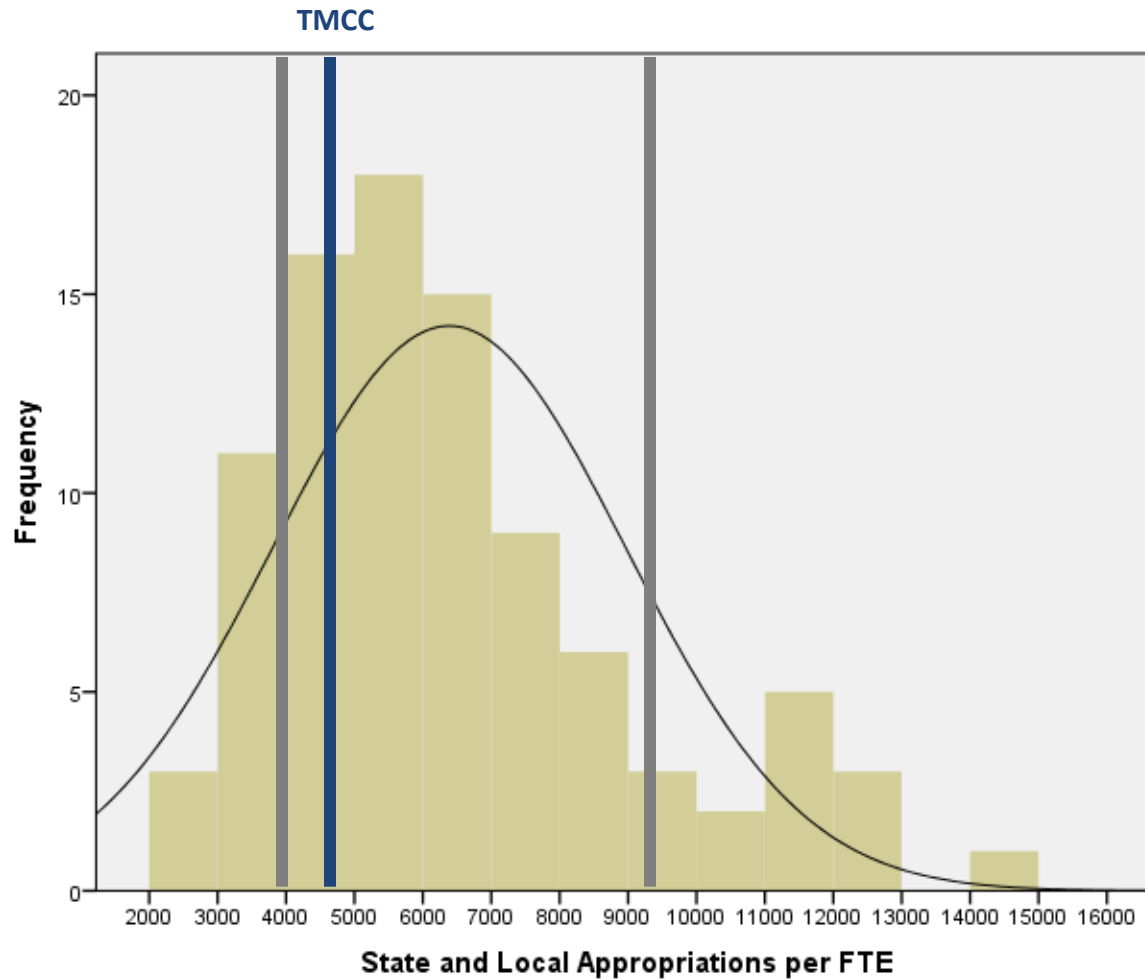
“ . . . lower public subsidies per student negatively affect completion rates and increase time to degree.”

David J. Deming, Increasing College Completion with a Federal Higher Education Matching Grant, The Hamilton Project, Policy Proposal 2017-03, April 2017, at p. 12  
(references omitted)

**"A number of recent studies suggest that postsecondary resources are strongly related to degree completion. Bound, Lovenheim, and Turner (2010) show that declines in resources per student—rather than changes in the academic preparation of students—have led to declining completion rates over time. Deming and Walters (2017) study the causal impact of changes in state appropriations on student enrollment and degree completion. They find that state higher education budget cuts have a large negative impact on postsecondary attainment."**

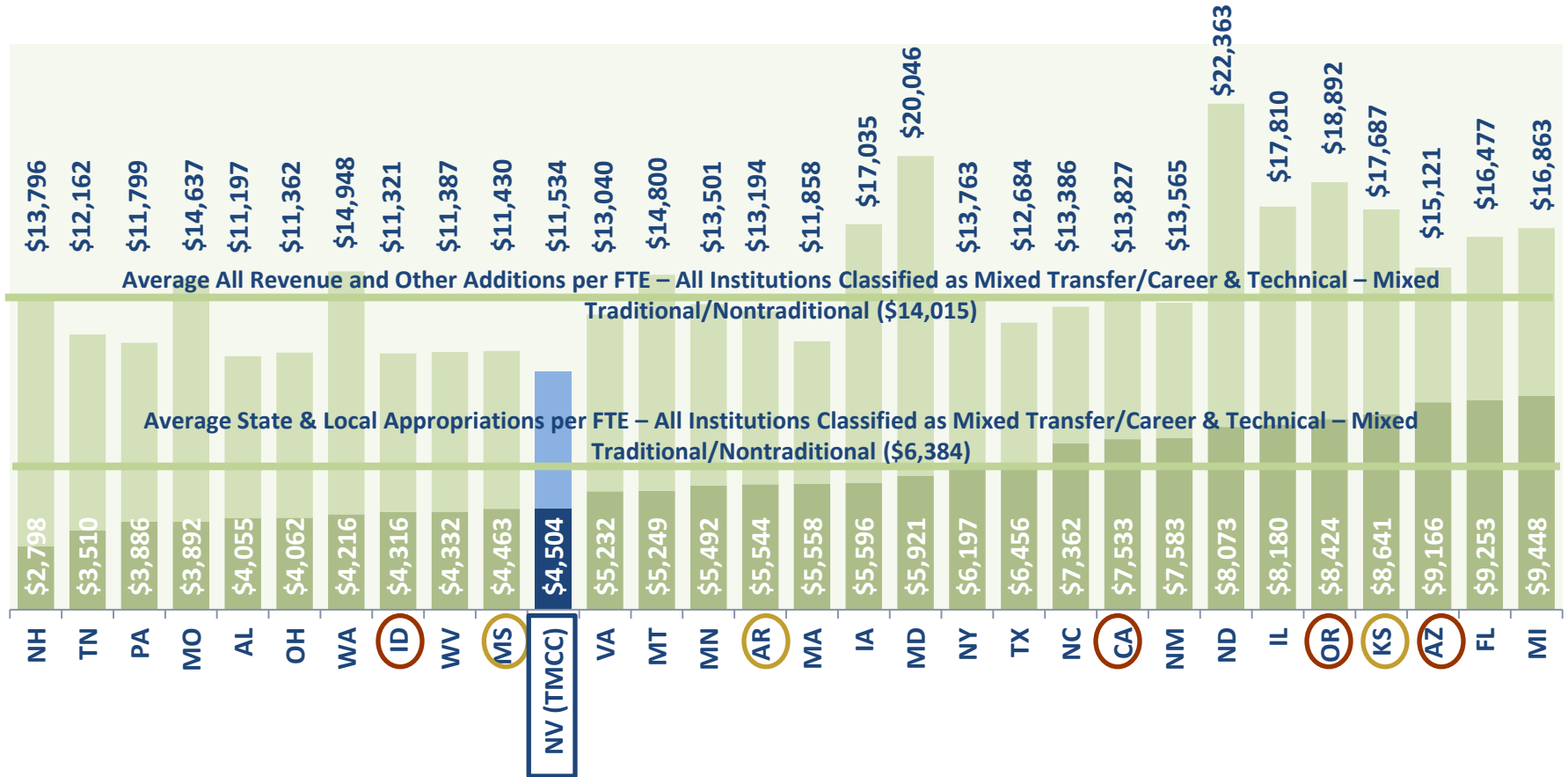
David J. Deming, Increasing College Completion with a Federal Higher Education Matching Grant, The Hamilton Project, Policy Proposal 2017-03, April 2017, at p. 12 (references omitted)(emphasis added).

# Associate's Colleges: Mixed Transfer/Career & Technical – Mixed Traditional/Nontraditional



# Associate's Colleges: Mixed Transfer/Career & Technical – Mixed Traditional/Nontraditional

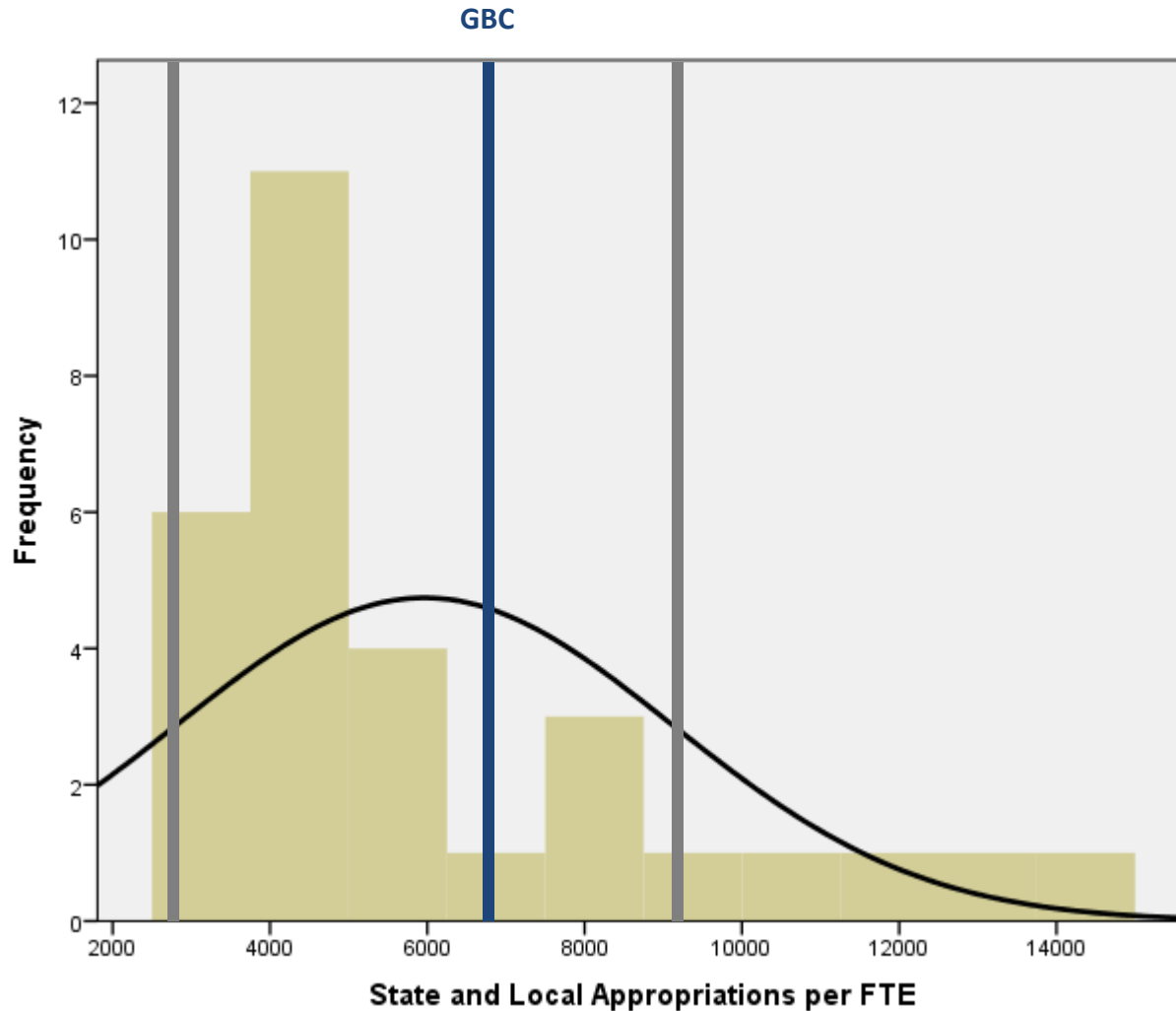
## State & Local Appropriations and Total All Revenue per FTE



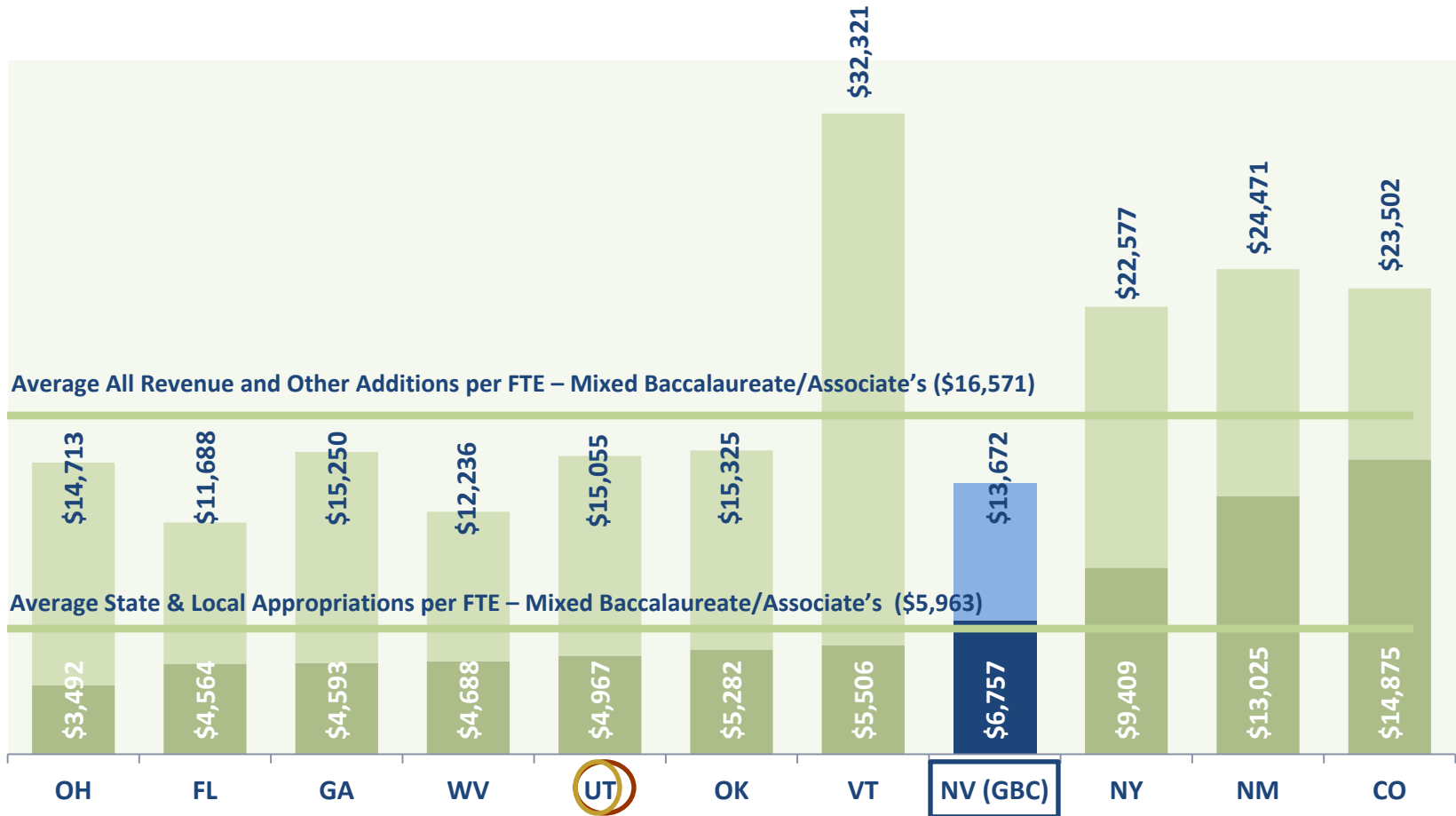
Neighboring States

Comparably Sized States

# Baccalaureate/Associate's Colleges: Mixed Baccalaureate/Associate's



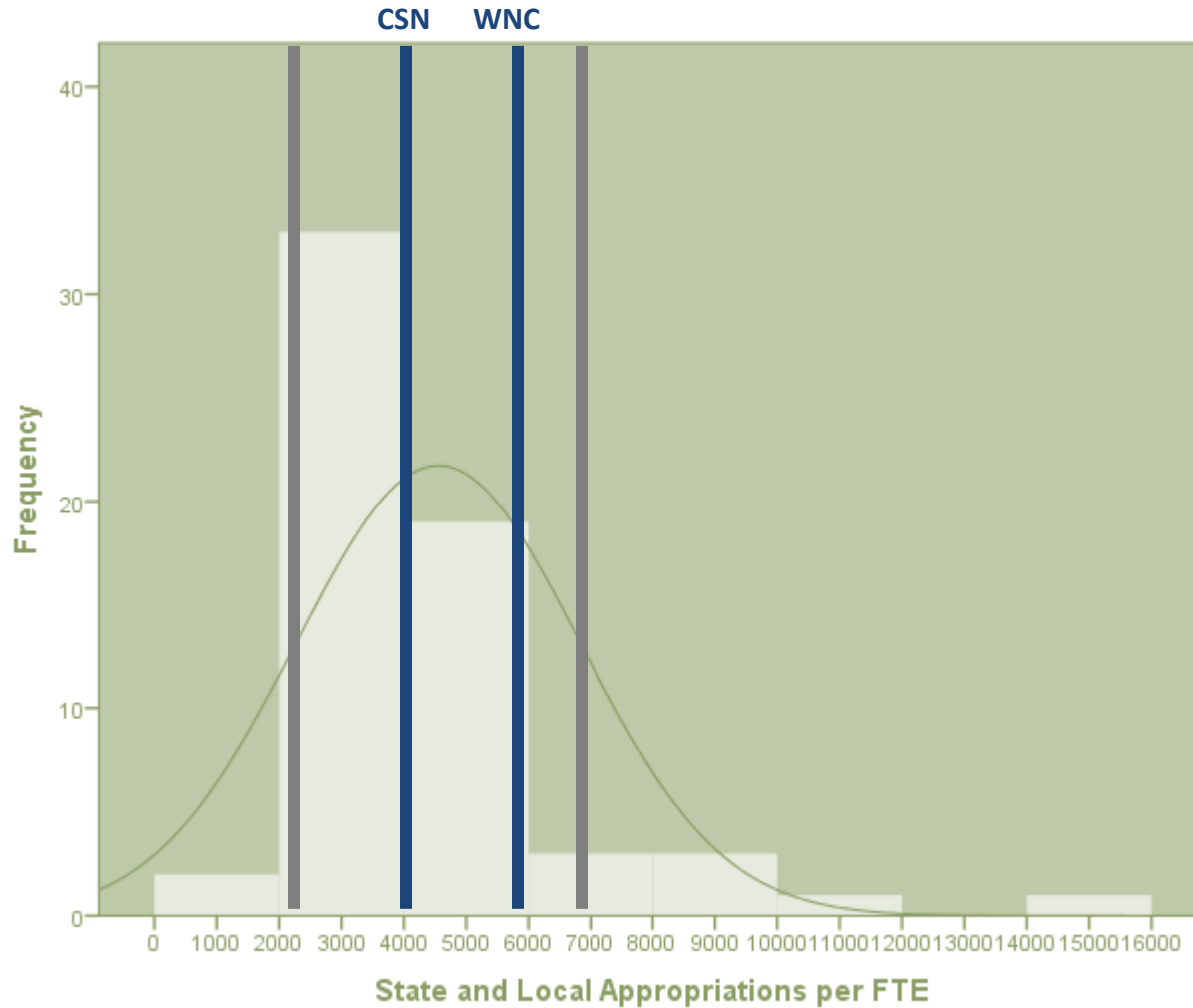
# Baccalaureate/Associate's Colleges: Mixed Baccalaureate/Associate's State & Local Appropriations and Total All Revenue per FTE



Neighboring States

Comparably Sized States

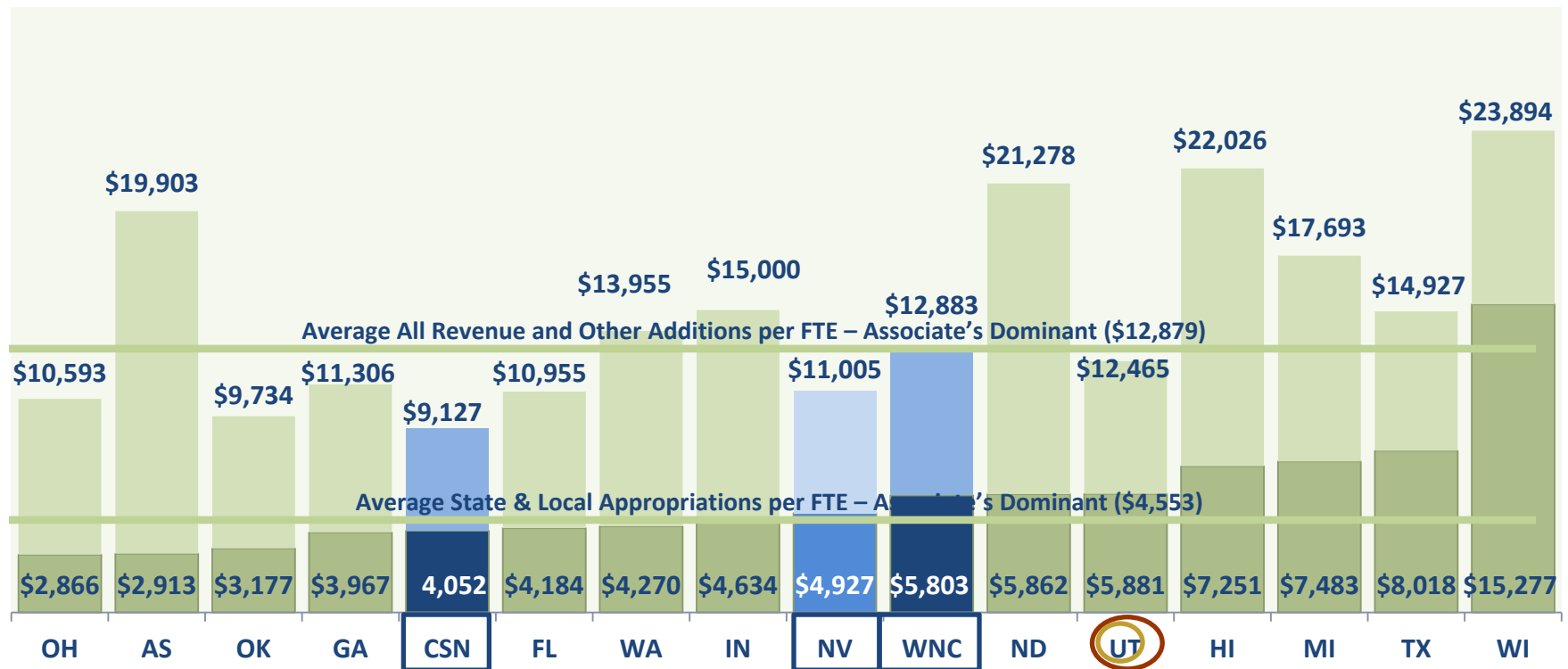
# Baccalaureate/Associate's Colleges: Associate's Dominant





# Baccalaureate/Associate's Colleges: Associate's Dominant

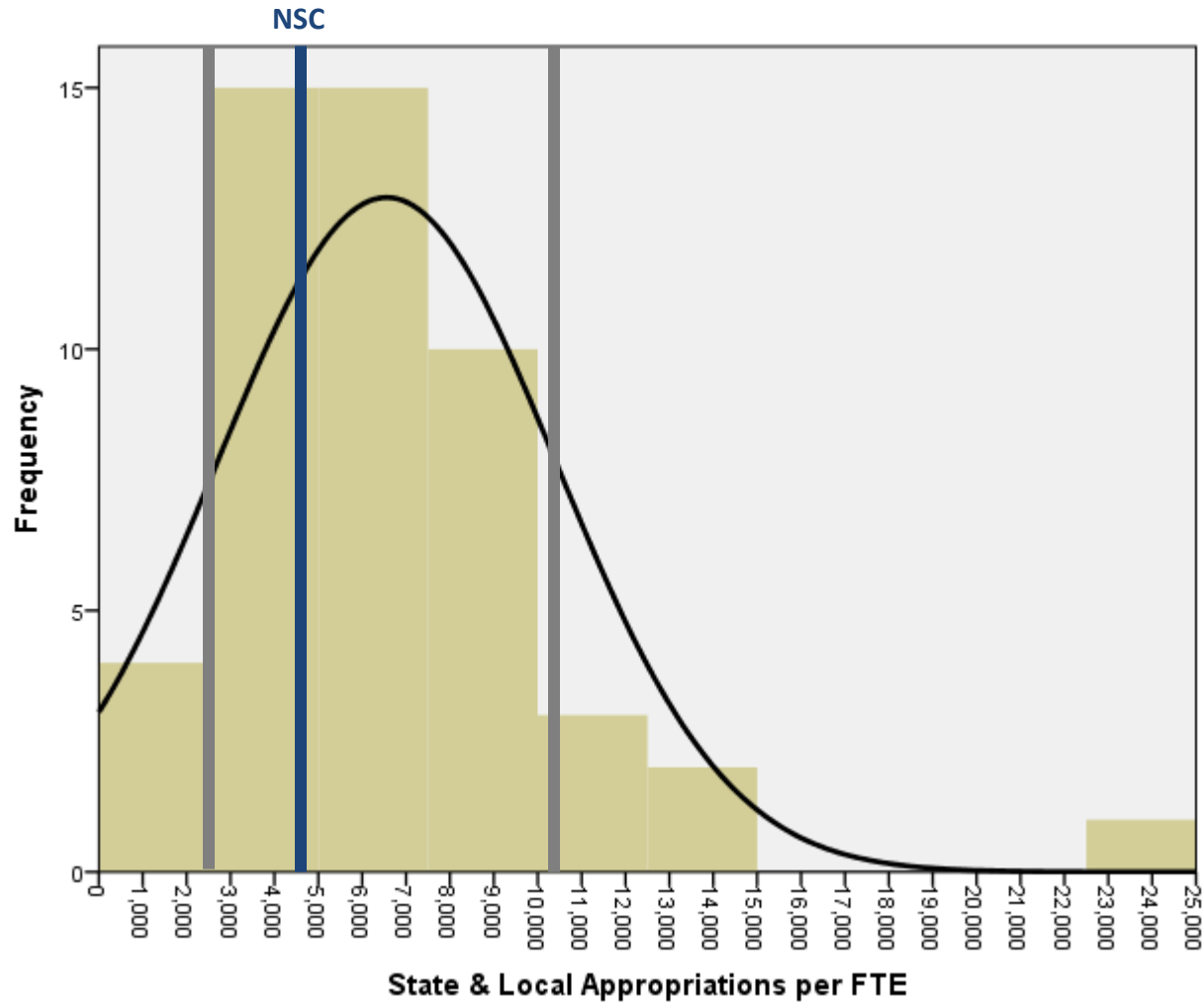
State & Local Appropriations and Total All Revenue per UG and GR FTE



Neighboring States  
Comparably Sized States

# Baccalaureate Colleges: Diverse Fields

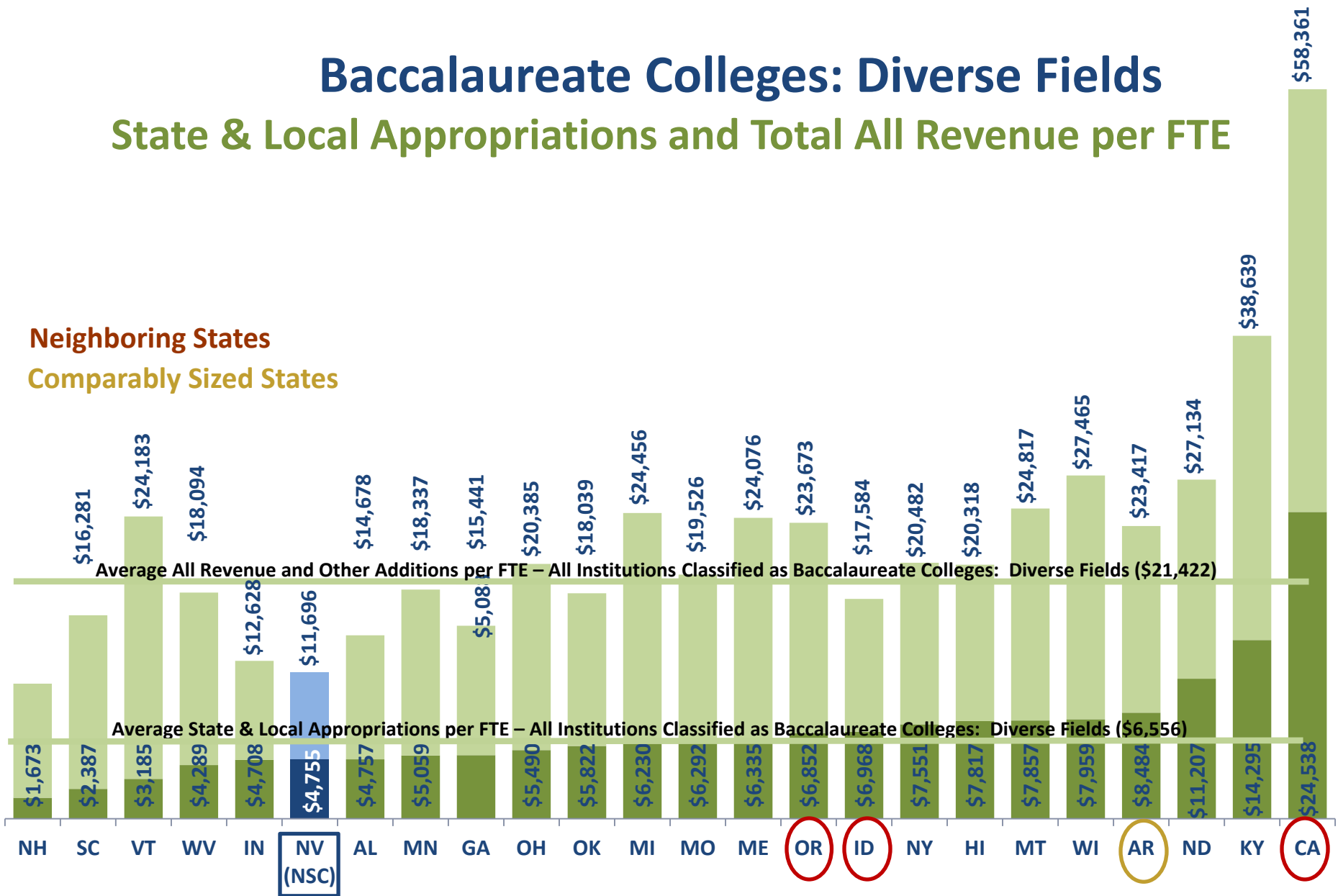
## All States



# Baccalaureate Colleges: Diverse Fields

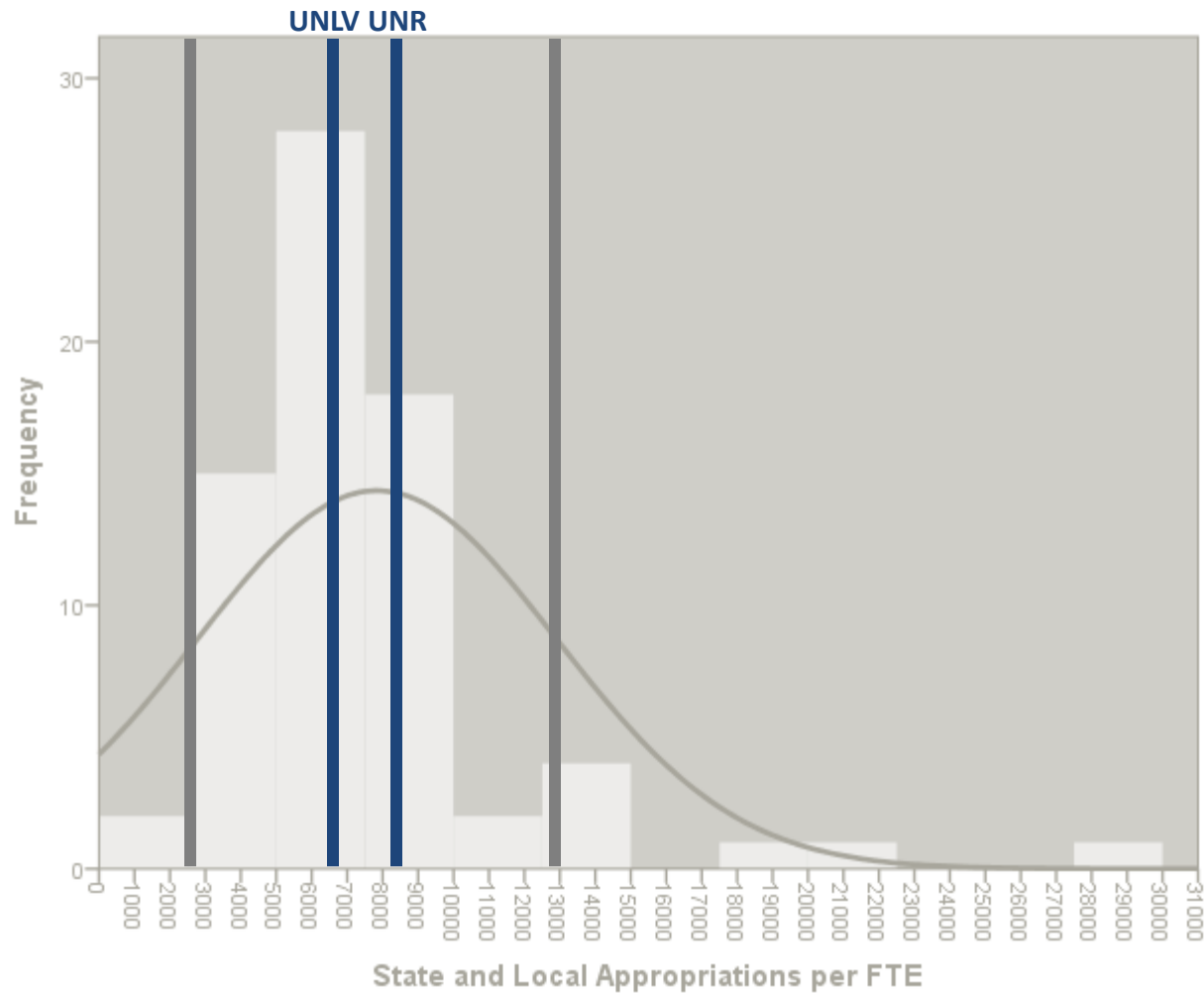
## State & Local Appropriations and Total All Revenue per FTE

Neighboring States  
Comparably Sized States

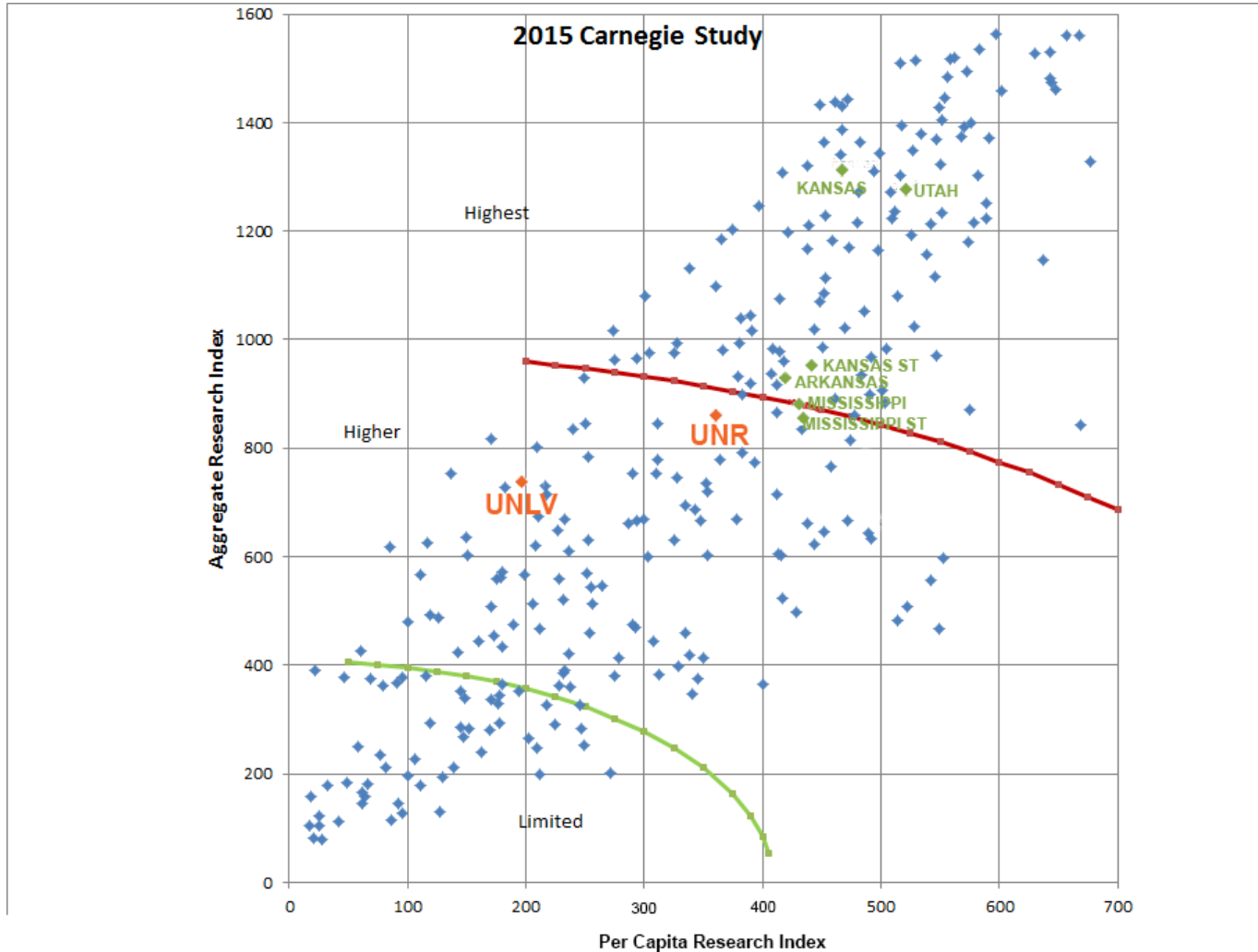


# Doctoral Universities: Higher Research Activity

## All States

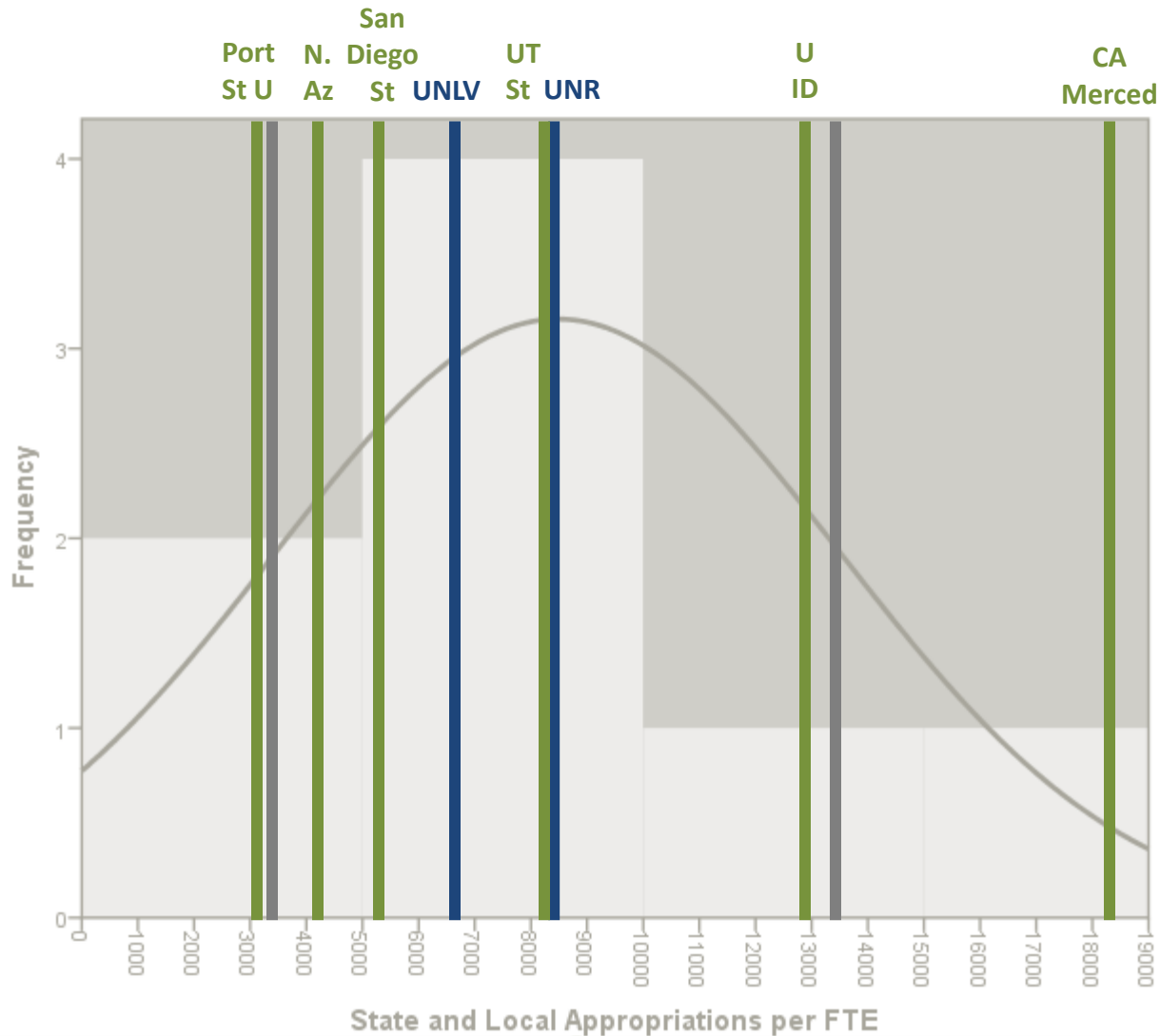


# 2015 Carnegie Study



# Doctoral Universities: Higher Research Activity

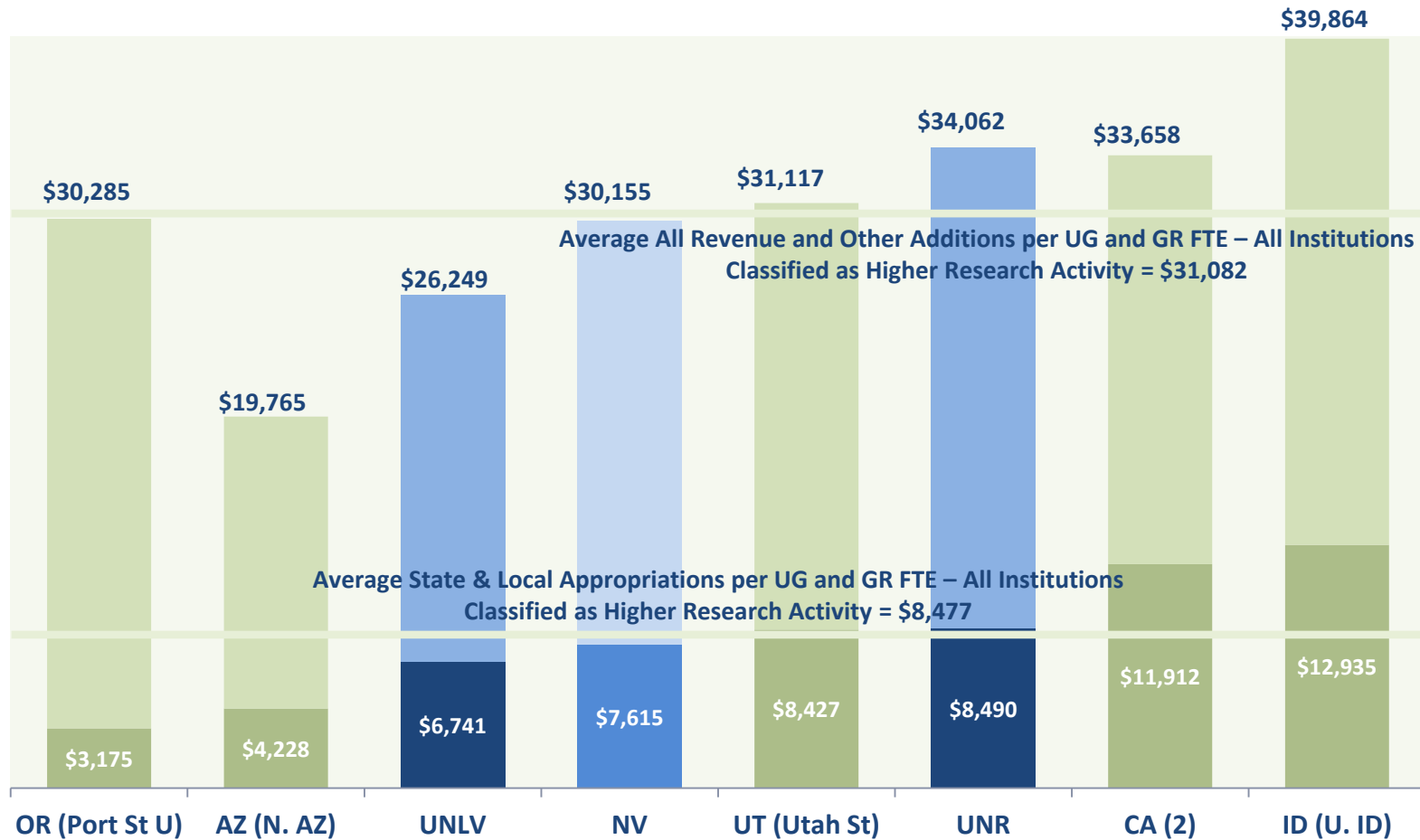
## States Neighboring Nevada



# Doctoral Universities: Higher Research Activity

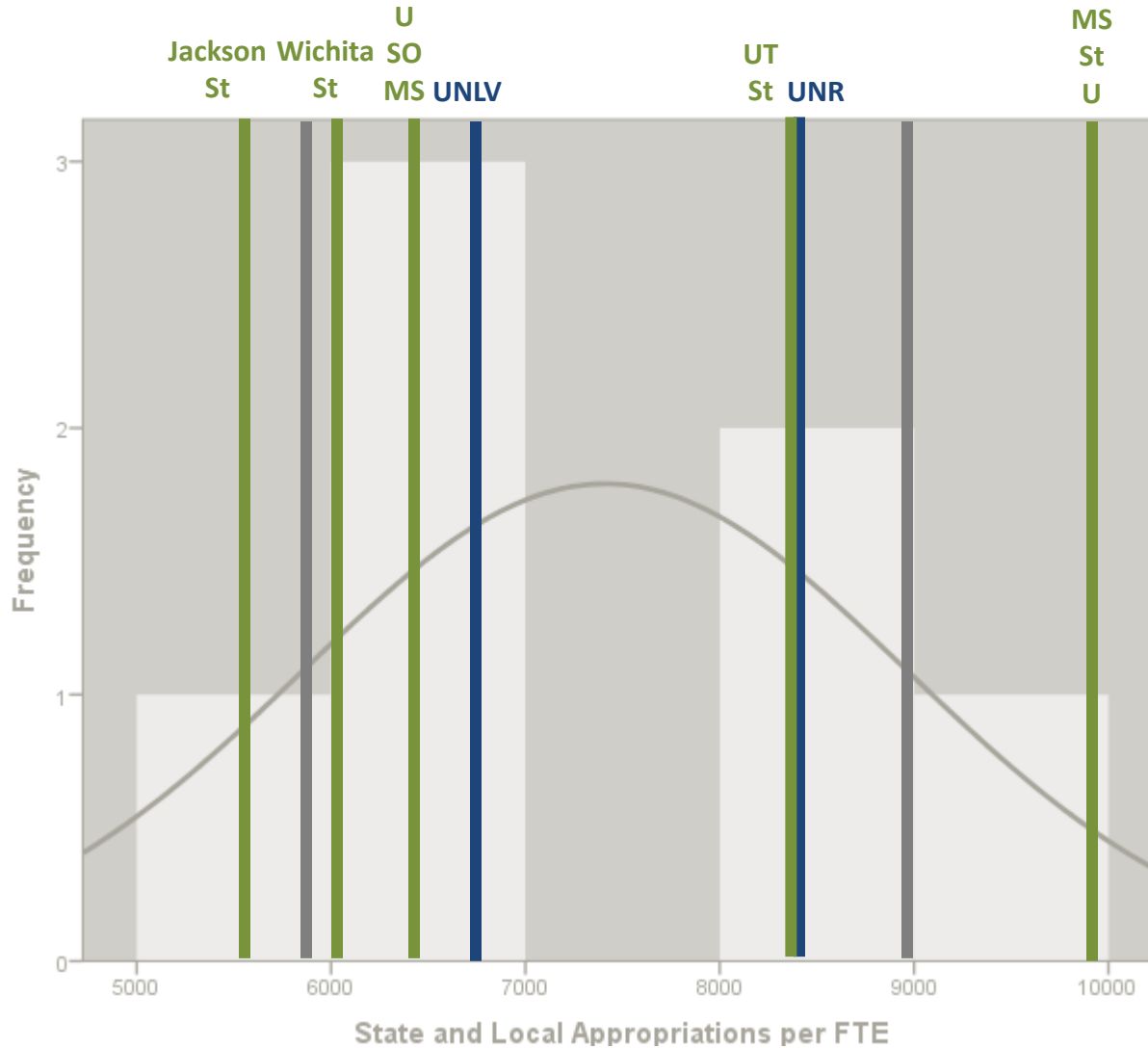
## State & Local Appropriations and Total All Revenue per UG and GR FTE

### States Neighboring Nevada



# Doctoral Universities: Higher Research Activity

## States with Comparable Size to Nevada



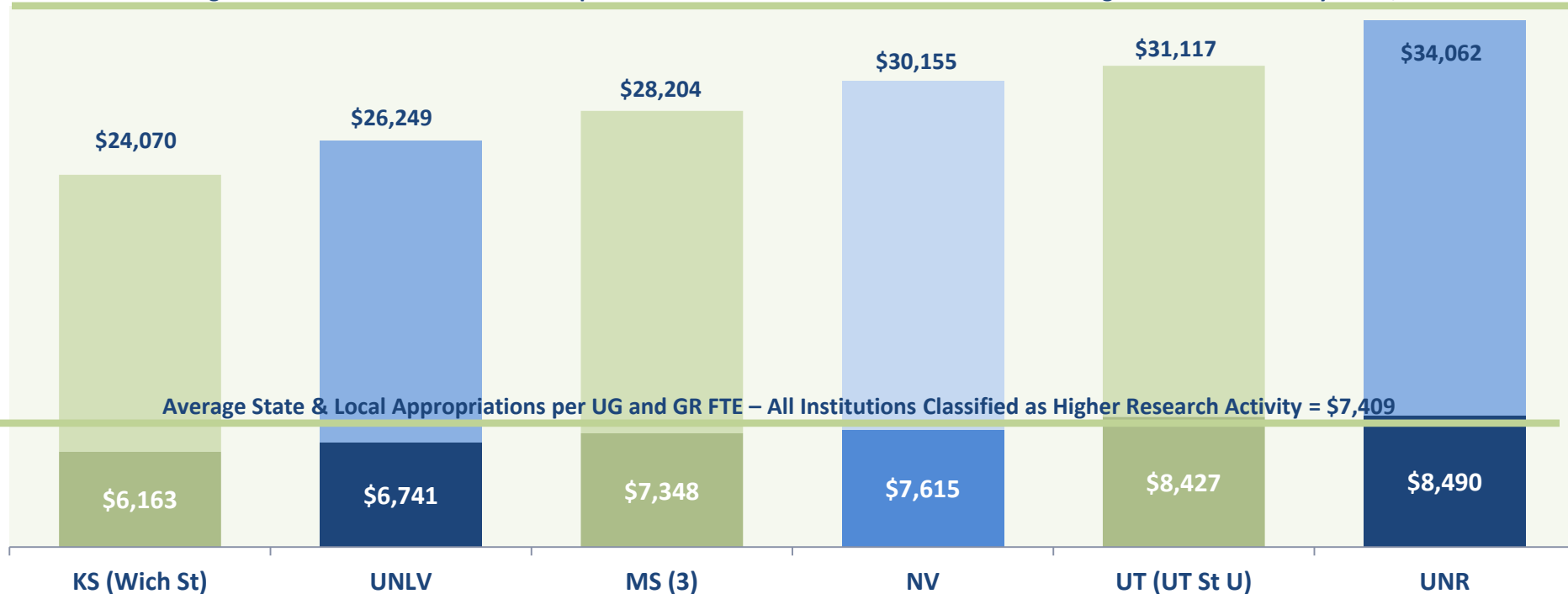


# Doctoral Universities: Higher Research Activity

## State & Local Appropriations and Total All Revenue per UG and GR FTE

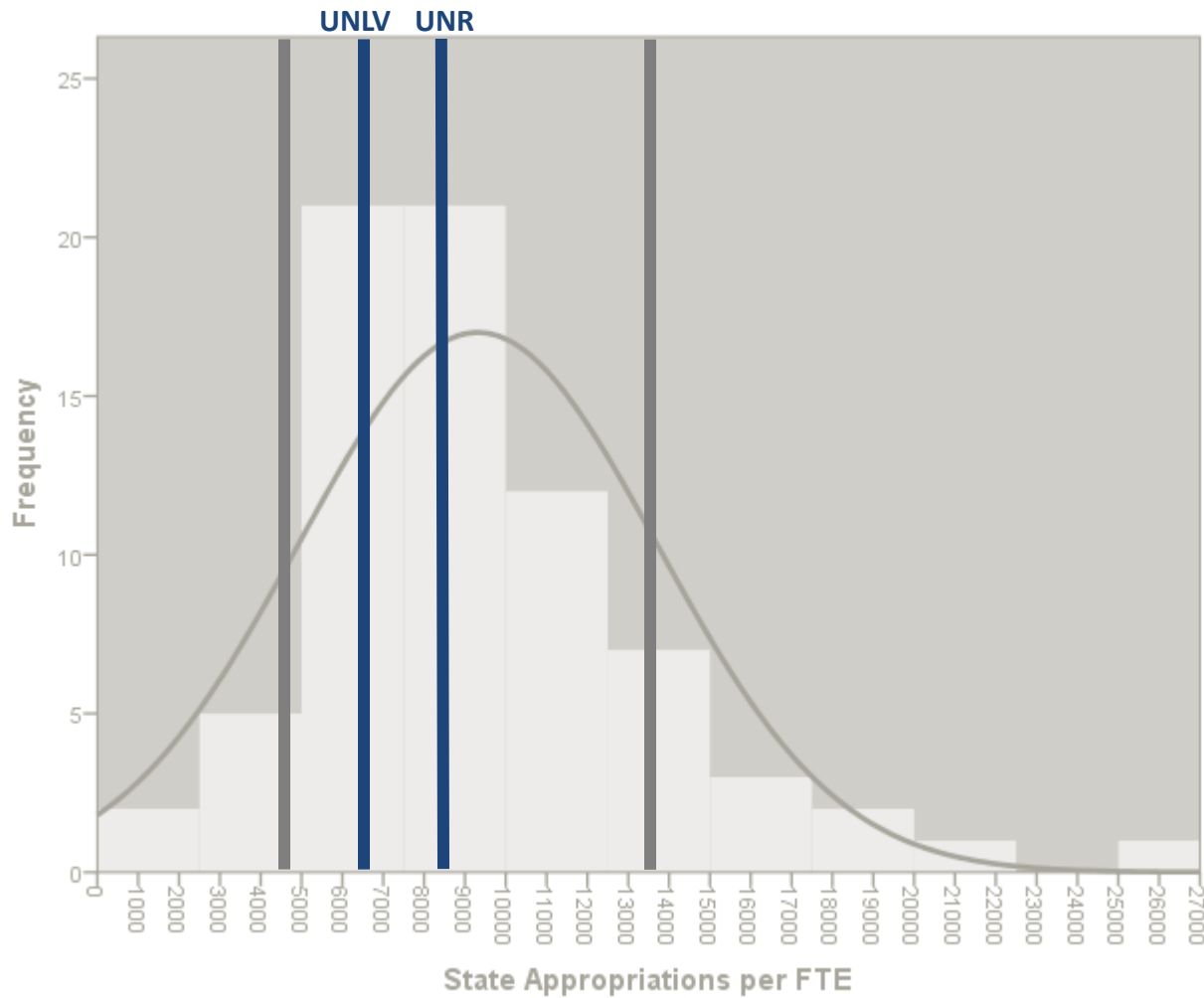
### States with Comparable Size to Nevada

Average All Revenue and Other Additions per UG and GR FTE – All Institutions Classified as Higher Research Activity = \$28,587

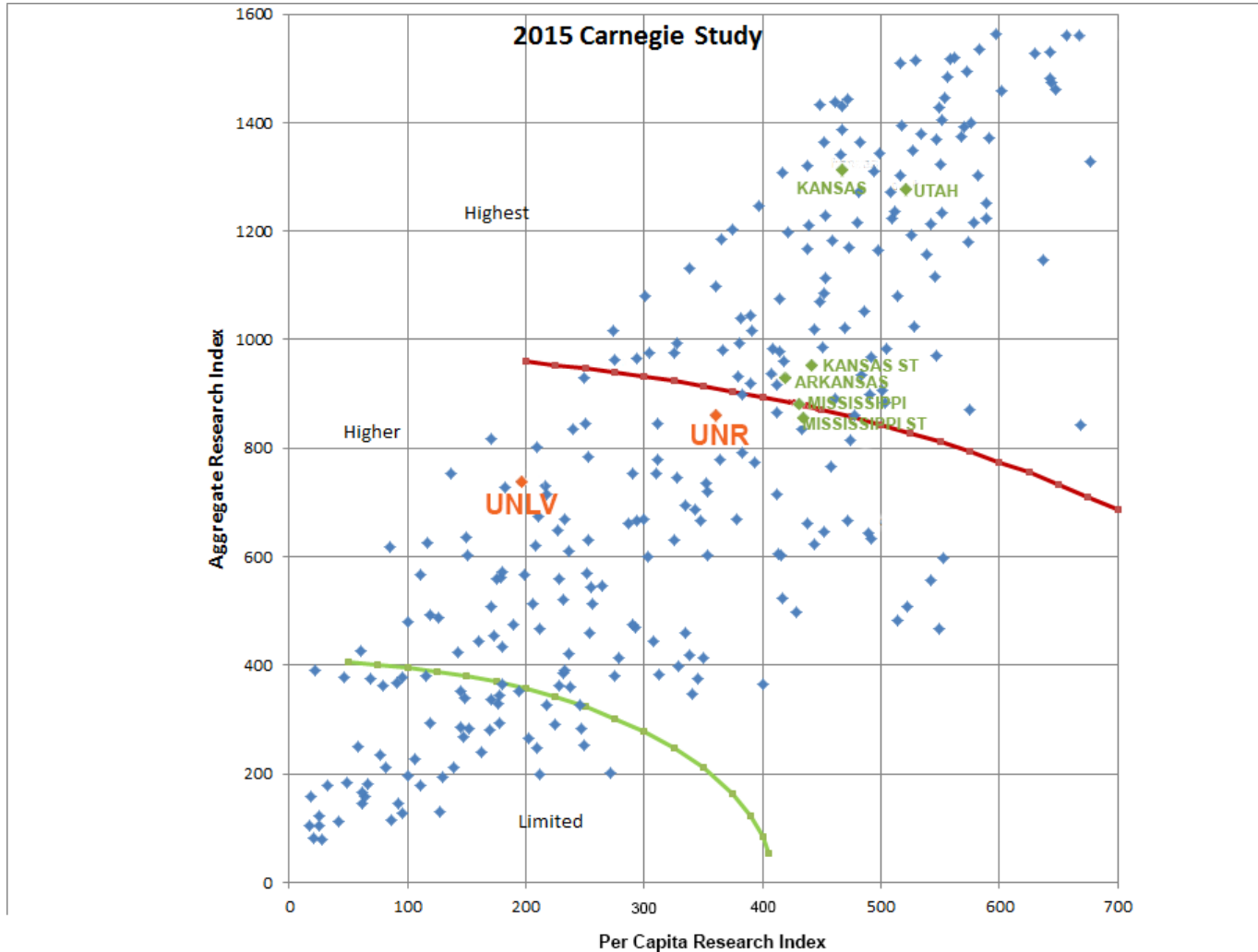


# Doctoral Universities: Highest Research Activity

## All States

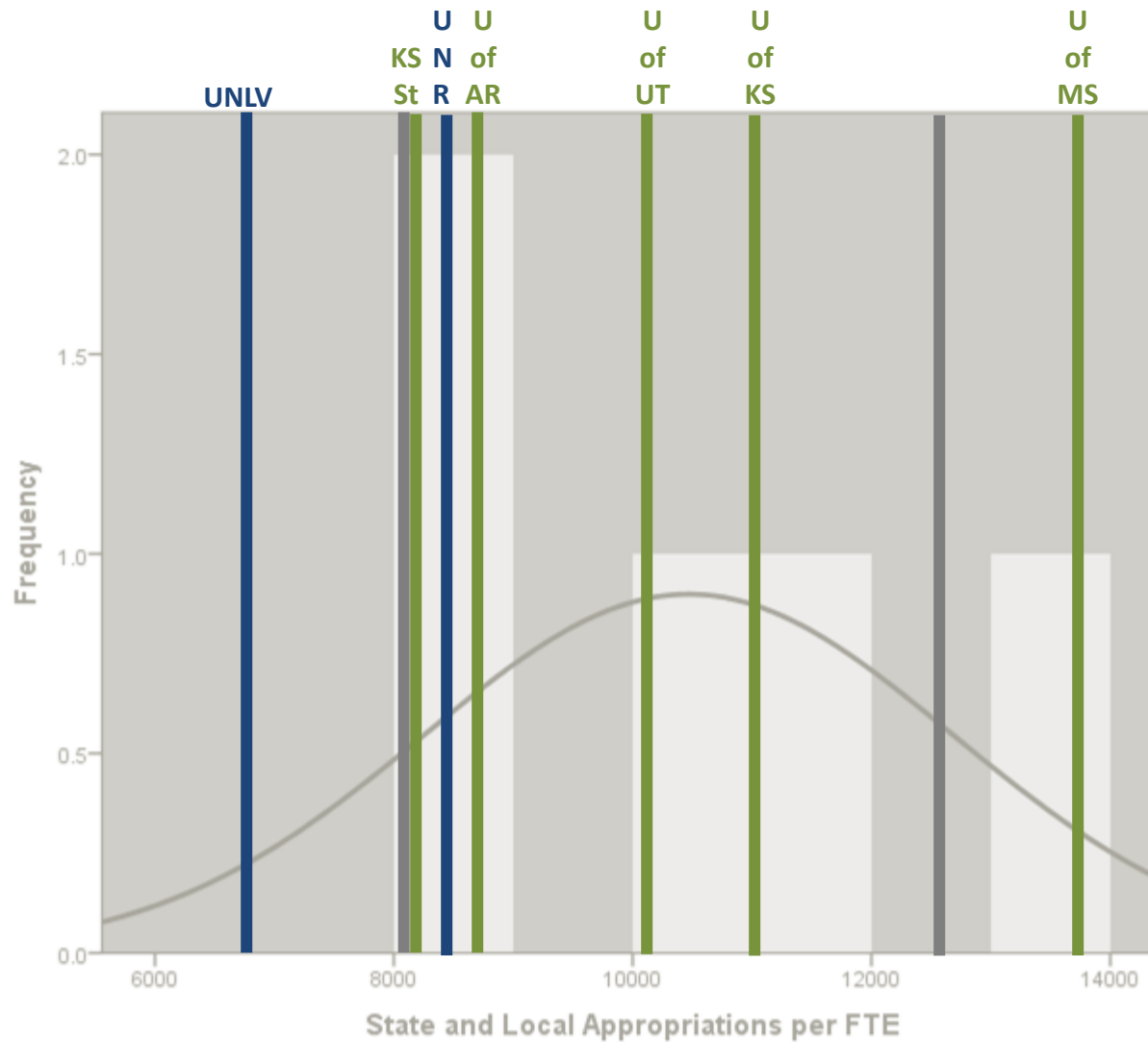


# 2015 Carnegie Study



# Doctoral Universities: Highest Research Activity

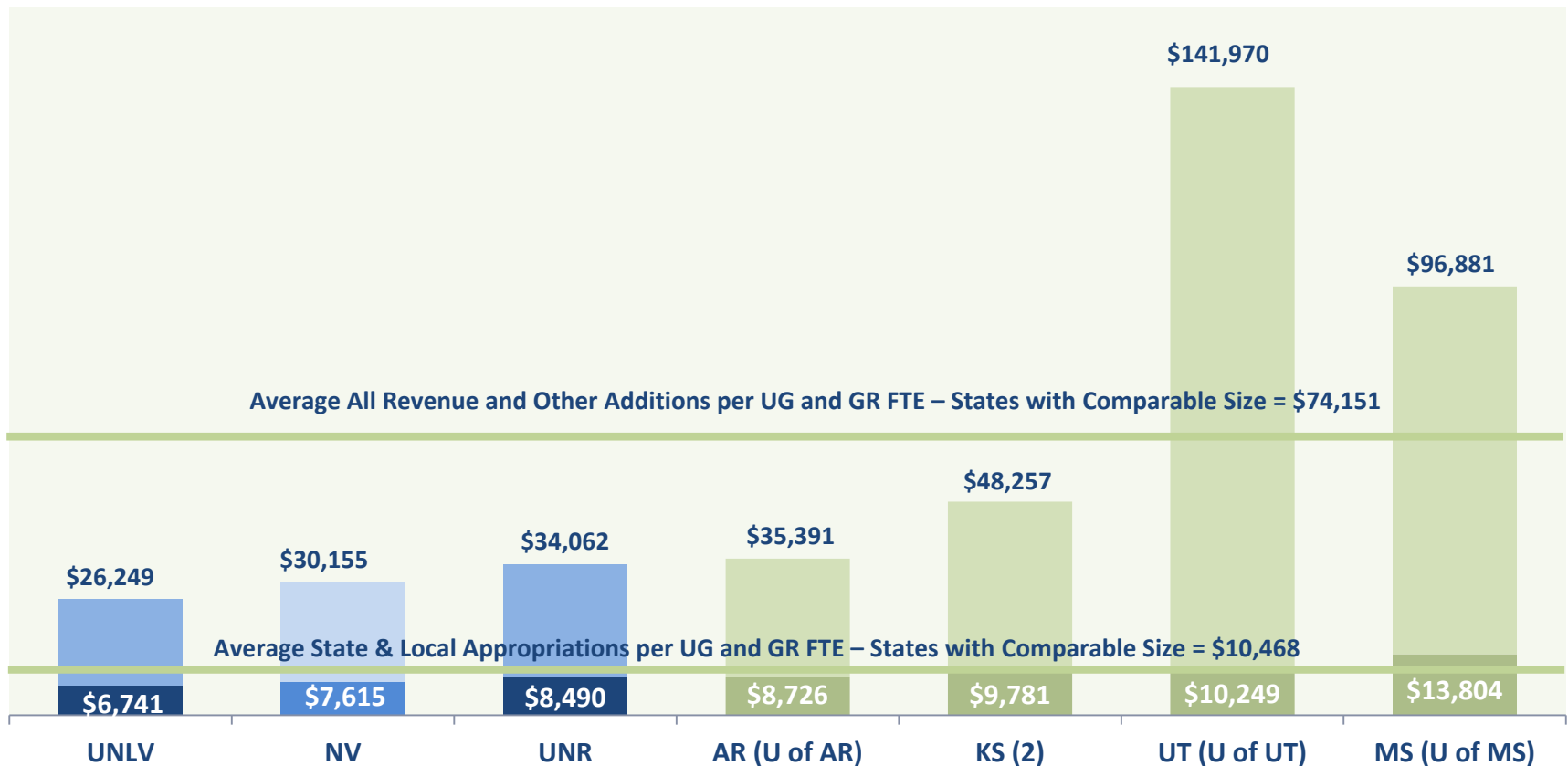
## States with Comparable Size to Nevada



# Doctoral Universities: Highest Research Activity

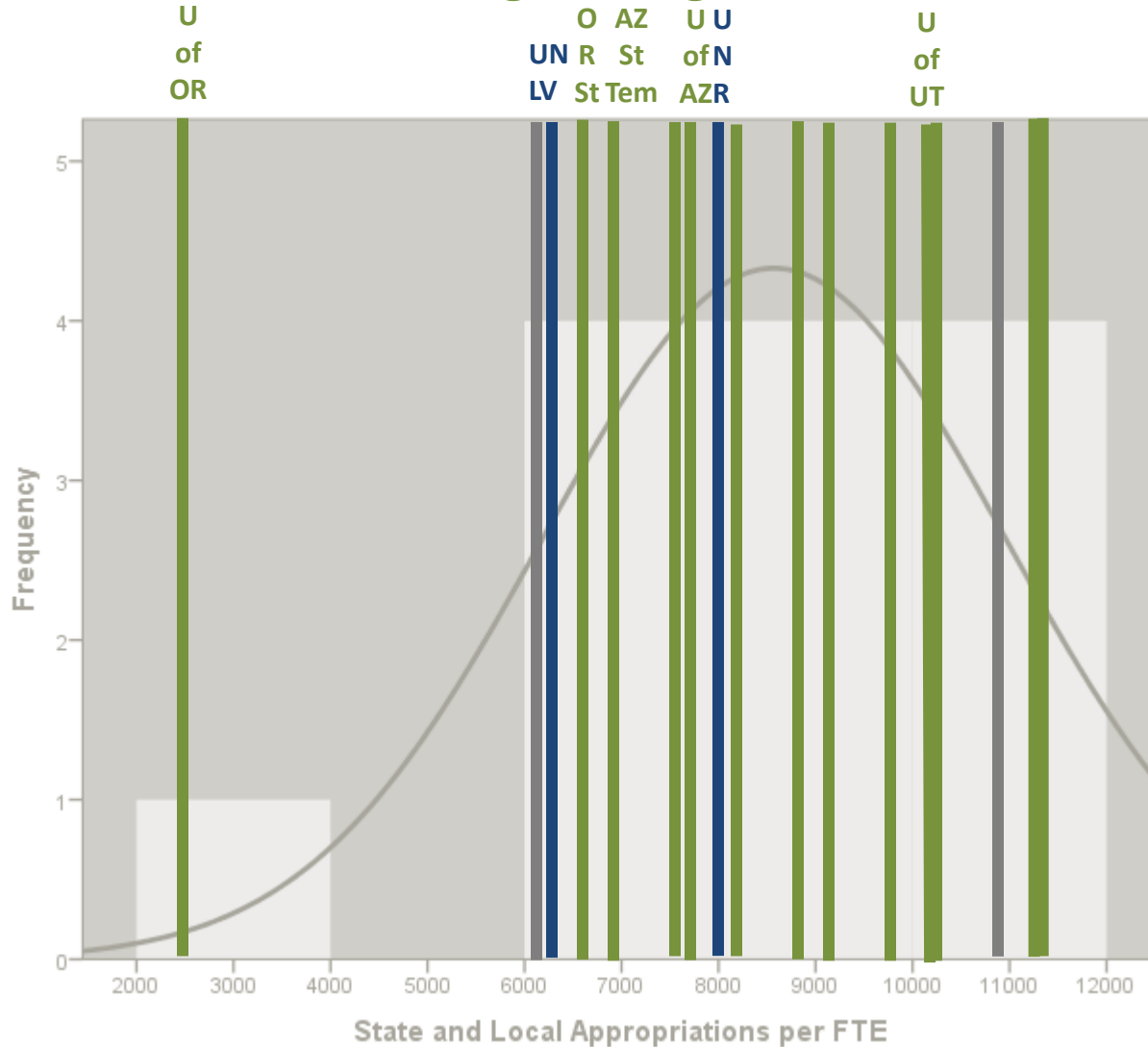
## State & Local Appropriations and Total All Revenue per UG and GR FTE

### States with Comparable Size to Nevada



# Doctoral Universities: Highest Research Activity

## States Neighboring Nevada



# Doctoral Universities: Highest Research Activity

## State & Local Appropriations and Total All Revenue per UG and GR FTE

### States Neighboring Nevada

