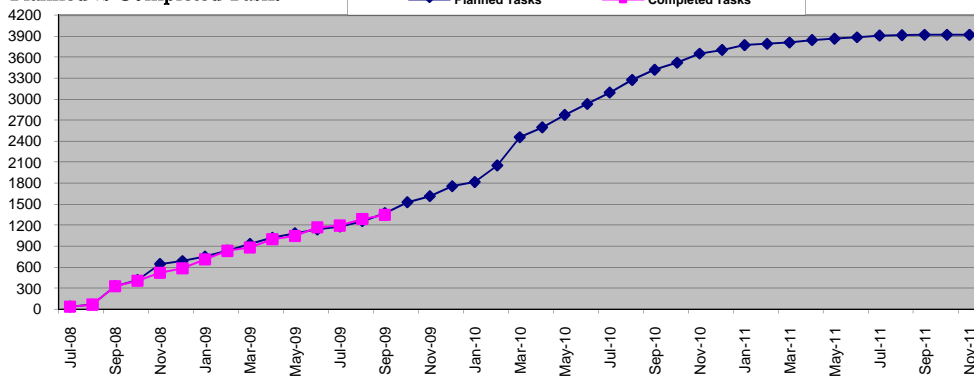


Pilot	
Major Go-Lives	Target Date
Admissions	10/1/2009
Financial Aid	2/1/2010
Registration	3/15/2010
Transcripts	9/1/2010
Co-Pilot	
Major Go-Lives	Target Date
Admissions	10/1/2010
Financial Aid	2/1/2011
Registration	3/15/2011
Transcripts	9/1/2011

Modifications	Count
Drafted	94
Approved	54
Developed	41
Tested	40

Start Date	Project Milestone	Production Date	Status
08/01/08	Academic Structure Defined	10/01/08	Completed
09/01/08	Course Catalog Data Mapping	01/15/09	Completed
10/01/08	Bio/Demo Conversion	03/01/09	Completed
10/01/08	Production Use – Admissions	10/1/2009	In-Progress
10/01/08	Future Term Class Schedule Initiated	10/1/2009	In-Progress
10/01/08	Financial Aid ISIRs Loaded	2/1/2010	In-Progress
12/01/08	Enrollment/Course Registration	3/1/2010	In-Progress
10/01/08	Financial Aid Award Letters Generated	4/1/2010	In-Progress
10/01/08	Production Use - Student Payments	5/1/2010	In-Progress
04/01/09	Production Use - Academic Transcripts	8/1/2010	In-Progress
Co-Pilot Milestones			
TBD	Production Use – Admissions	10/1/2010	Not Started
TBD	Future Term Class Schedule Initiated	10/1/2010	Not Started
05/01/10	Financial Aid ISIRs Loaded	2/1/2011	Not Started
05/01/10	Enrollment/Course Registration	3/1/2011	Not Started
05/01/10	Financial Aid Award Letters Generated	4/1/2011	Not Started
05/01/10	Production Use - Student Payments	5/1/2011	Not Started
05/01/10	Production Use - Academic Transcripts	8/1/2011	Not Started

Planned vs Completed Tasks



Tasks In Progress (> 0%, but < 100% Complete) = 170

Recent Activity / Accomplishments (Last 30 Days):

- (1) Bio/Demo data went Live Sept. 8, 2009. Additional "incremental" conversions to follow.
- (2) UNLV is Live with Admissions. Transfer Credit processing will be live very soon.
- (3) TMCC conducted a dry run of their Admission Go-Live. More to follow. Go-Live is Oct. 12, 2009
- (4) Initial Enrollment History conversion has begun. Testing will continue for several months.
- (5) SR team is nearly complete with enrollment process testing.
- (6) Completed Transfer Credit Rule processing training at UNLV
- (7) Initial (temporary) OBIEE+ environment installed for prototyping.
- (8) Completed the build of TMCC's Assoc. of Arts & Assoc. of Science General Education requirements.

Key Upcoming Activities (Next 30 Days):

- (1) Go-Live for Course Catalog data and Class Schedule data is planned for Oct.
- (2) Training and Security for catalog and class schedule go-live.
- (3) Automation of Admission processing will increase.
- (4) Monitoring the UNLV AD go-live and preparing for TMCC AD go-live - Oct. 12, 2009.
- (5) OBIEE+ workshop is scheduled for early Oct.
- (6) Continue to build Academic Advising requirements for majors/minors/concentrations for Pilots.
- (7) EPM (data warehouse) production environments operational for UNLV and Share.
- (8) FA to work on Work Study processes, Satisfactory Academic Progress and alternative loans

Current Issues / Concerns:

- (1) Institutions are dealing with the impacts of mandatory and voluntary staff reductions and other budgetary containment measures.