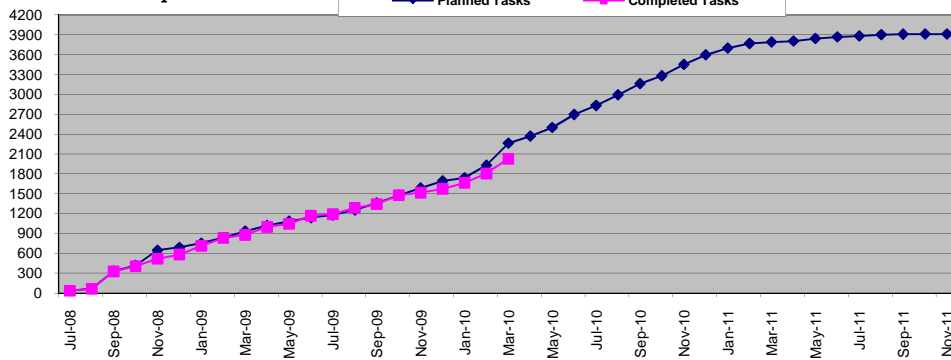


Pilot	
Major Go-Lives	Target Date
Admissions	10/1/2009
Financial Aid	2/1/2010
Registration	4/1/2010
Transcripts	9/1/2010
Co-Pilot	
Major Go-Lives	Target Date
Admissions	10/1/2010
Financial Aid	2/1/2011
Registration	3/15/2011
Transcripts	9/1/2011

Modifications	Count
Drafted	110
Approved	65
Developed	54
Tested	54

Start Date	Project Milestone	Production Date	Status
08/01/08	Academic Structure Defined	10/01/08	Completed
09/01/08	Course Catalog Data Mapping	01/15/09	Completed
10/01/08	Bio/Demo Conversion	03/01/09	Completed
10/01/08	Production Use – Admissions	10/1/2009	Completed
10/01/08	Future Term Class Schedule Initiated	10/1/2009	Completed
10/01/08	Financial Aid ISIRs Loaded	2/1/2010	Completed
12/01/08	Enrollment/Course Registration	3/1/2010	In-Progress
10/01/08	Financial Aid Award Letters Generated	4/1/2010	In-Progress
10/01/08	Production Use - Student Payments	5/1/2010	In-Progress
04/01/09	Production Use - Academic Transcripts	8/1/2010	In-Progress
Co-Pilot Milestones			
03/01/10	Production Use – Admissions	10/1/2010	In-Progress
05/01/10	Future Term Class Schedule Initiated	10/1/2010	In-Progress
05/01/10	Financial Aid ISIRs Loaded	2/1/2011	In-Progress
05/01/10	Enrollment/Course Registration	3/1/2011	Not Started
05/01/10	Financial Aid Award Letters Generated	4/1/2011	Not Started
05/01/10	Production Use - Student Payments	5/1/2011	Not Started
05/01/10	Production Use - Academic Transcripts	8/1/2011	Not Started

Planned vs Completed Tasks



Tasks In Progress (> 0%, but < 100% Complete) = 228

Recent Activity / Accomplishments (Last 30 Days):

- (1) Completed all major data conversions for TMCC and UNLV; Career-Program-Plans, Enrollment history, Residency, Transfer Credit, FERPA, Student Groups, Service Indicators, etc.
- (2) All modules at the pilot institutions continue to test and prepare for their April '10 registration go-lives.
- (3) Performance testing continues to occur in the Share and UNLV TST environments.
- (4) Bundle 16 (patches and fixes) was applied.
- (5) Touchnet (PCI compliant credit card processing) testing in PeopleSoft is complete.
- (6) Financial Aid continues to go live - building budgets and sending verification letters.
- (7) Training at pilot institutions continues
- (8) Admissions IDPs with the Co-Pilot institutions have begun.

Key Upcoming Activities (Next 30 Days):

- (1) Go-Live for Registration (add/drops), Tuition & Fee Calc, Payment Processing and eBilling at pilot institutions
- (2) Incremental data conversions for Enrollments, Transfer Credit, Test Credit and Other Credit detail.
- (3) Pilot Financial Aid teams will continue to go-live with new functions as their processing calendar moves along
- (4) Support pilots with their go-live activities.
- (5) AA team will continue to build degrees requirements
- (6) Two additional consultants will start. One for AA (working remotely) and another technical consultant.

Current Issues / Concerns:

- (1) Managerial and longitudinal reporting remains a challenge. The new data warehouse will not be ready at go-live and reports necessary to manage the day to day operations will have to be created from the transaction system. Due to the complexity of the transactional system, limited resources will be capable or authorized to produce such reports.
- (2) Limited staffing may impact the scope and/or timeline of the EPM/OBIEE implementation.