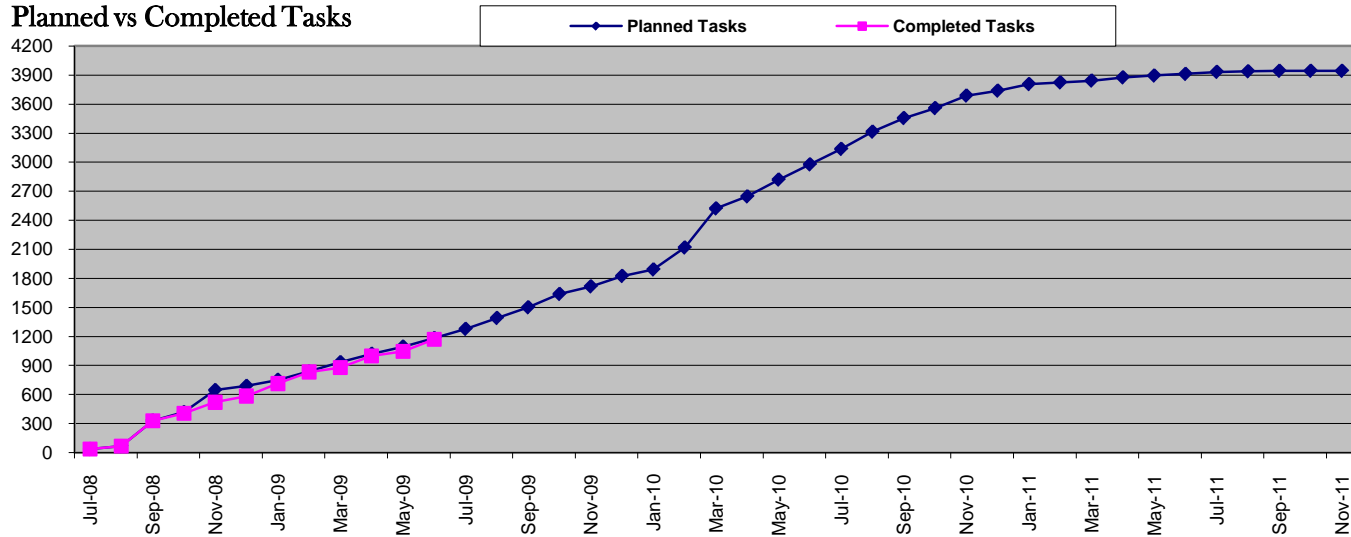


Pilot Major Go-Lives	Target Date
Admissions	10/1/2009
Financial Aid	2/1/2010
Registration	3/15/2010
Transcripts	9/1/2010
Co-Pilot Major Go-Lives	Target Date
Admissions	10/1/2010
Financial Aid	2/1/2011
Registration	3/15/2011
Transcripts	9/1/2011

Modifications	Count
Drafted	59
Approved	36
Developed	27
Tested	24

Start Date	Project Milestone	End Date	Status
08/01/08	Academic Structure Defined	10/01/08	Completed
09/01/08	Course Catalog Data Mapping	01/15/09	Completed
10/01/08	Bio/Demo Conversion	03/01/09	In-Progress
10/01/08	Production Use – Admissions	10/1/2009	In-Progress
10/01/08	Future Term Class Schedule Initiated	10/1/2009	In-Progress
10/01/08	Financial Aid ISIRs Loaded	2/1/2010	In-Progress
12/01/08	Enrollment/Course Registration	3/1/2010	In-Progress
10/01/08	Financial Aid Award Letters Generated	4/1/2010	In-Progress
10/01/08	Production Use - Student Payments	5/1/2010	In-Progress
04/01/09	Production Use - Academic Transcripts	8/1/2010	In-Progress
Co-Pilot Milestones			
11/01/09	Production Use – Admissions	10/1/2010	Not Started
11/01/09	Future Term Class Schedule Initiated	10/1/2010	Not Started
05/01/10	Financial Aid ISIRs Loaded	2/1/2011	Not Started
05/01/10	Enrollment/Course Registration	3/1/2011	Not Started
05/01/10	Financial Aid Award Letters Generated	4/1/2011	Not Started
05/01/10	Production Use - Student Payments	5/1/2011	Not Started
05/01/10	Production Use - Academic Transcripts	8/1/2011	Not Started

Planned vs Completed Tasks



Tasks In Progress (> 0%, but < 100% Complete) = 125

Recent Activity / Accomplishments (Last 30 Days):

- (1) Continued testing and refinement of processes - AD, SF, SR, & FA.
- (2) AA continues to build degree requirements. TMCC has built general education requirements for Associate of Arts.
- (3) Admissions has tested 100+ Query Based Updates (QBUs). Another 100+ remains
- (4) Kicked off Security and End User Training planning activities at both pilot institutions.
- (5) Completed Bio/Demo data conversion into CNV database. Included data from HR and all NSHE institutions. Institutions are still reviewing potential duplicates and will continue to do so for many months.
- (6) Four additional teams have recently started - EPM (data warehouse), Portal, Security, and Training
- (7) Portal planning meeting with TMCC - June 9 & 10. Subteams at both pilots have been formed for a) technical and b) design of the portals and the teams meet regularly.
- (8) FA started work on the Millennium and Gear Up processes and customizations.
- (9) EPM team abandoned the Windows server solution/option for the more favorable Unix based solution.
- (10) Creation of the Test and Production environments for the Share institutions.

Key Upcoming Activities (Next 30 Days):

- (1) Continue to test, complete test scripts, and finalize BPGs.
- (2) Completion of the Admission Application interface for TMCC and UNLV using a generic format that will work for co-pilots as well.
- (3) Begin building AD and CC security and training materials for UNLV & TMCC.
- (4) Begin running conversions of Career/Program/Plan data.
- (5) Build prototypes of authentication options for institutions in the Share database as well as UNLV & UNR
- (6) Begin Admissions go-live planning activities for UNLV & TMCC

Current Issues / Concerns:

- (1) Impact of furloughs and other budget containment measures on the project are yet to be determined.
- (2) Resolution of the data warehouse reporting tool(s).