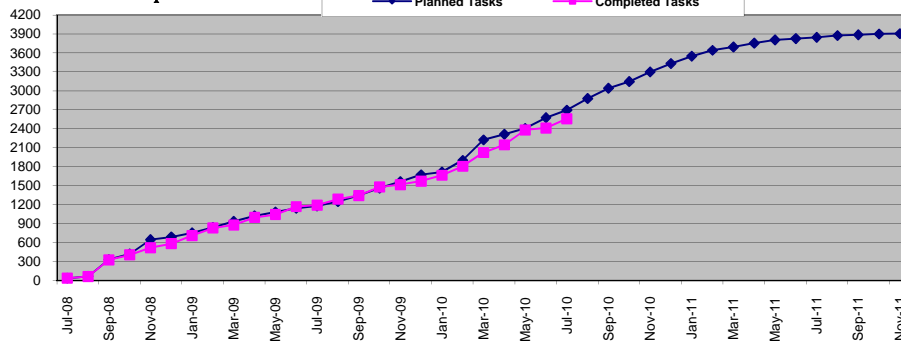


Pilot	
Major Go-Lives	Target Date
Admissions	10/1/2009
Financial Aid	2/1/2010
Registration	4/1/2010
Transcripts	9/1/2010
Co-Pilot	
Major Go-Lives	Target Date
Admissions	10/1/2010
Financial Aid	2/1/2011
Registration	3/15/2011
Transcripts	9/1/2011

Modifications	Count
Drafted	135
Approved	95
Developed	82
Tested	80

Start Date	Project Milestone	Production Date	Status
08/01/08	Academic Structure Defined	10/01/08	Completed
09/01/08	Course Catalog Data Mapping	01/15/09	Completed
10/01/08	Bio/Demo Conversion	03/01/09	Completed
10/01/08	Production Use – Admissions	10/1/2009	Completed
10/01/08	Future Term Class Schedule Initiated	10/1/2009	Completed
10/01/08	Financial Aid ISIRs Loaded	2/1/2010	Completed
12/01/08	Enrollment/Course Registration	3/1/2010	Completed
10/01/08	Financial Aid Award Letters Generated	4/1/2010	Completed
10/01/08	Production Use - Student Payments	5/1/2010	Completed
04/01/09	Production Use - Academic Transcripts	8/1/2010	In-Progress
Co-Pilot Milestones			
03/01/10	Production Use – Admissions	10/1/2010	In-Progress
05/01/10	Future Term Class Schedule Initiated	10/1/2010	In-Progress
05/01/10	Financial Aid ISIRs Loaded	2/1/2011	In-Progress
05/01/10	Enrollment/Course Registration	3/1/2011	In-Progress
05/01/10	Financial Aid Award Letters Generated	4/1/2011	In-Progress
05/01/10	Production Use - Student Payments	5/1/2011	In-Progress
05/01/10	Production Use - Academic Transcripts	8/1/2011	In-Progress

Planned vs Completed Tasks



Tasks In Progress (> 0%, but < 100% Complete) = 142

Recent Activity / Accomplishments (Last 30 Days):

- (1) Co-pilot's completed IDPs for cashiering, e-billing, transcript requests, program/plan, enrollment and self service enrollment
- (2) TMCC and UNLV originated loans and Pell awards.
- (3) Updating degree requirements for UNLV and TMCC based on updated validation packets.
- (4) Co-pilots are configuring Tuition Calc, Cashiering and e-Billing
- (5) Co-pilots are setting up Item Types, Charge Priorities and other core SF setups.
- (6) Testing Academic Transcript Request modification
- (7) TMCC is now loading gmail email accounts into PeopleSoft.
- (8) Continuing post production support for TMCC and UNLV.

Key Upcoming Activities (Next 30 Days):

- (1) Upcoming IDPs include; Refunding, Maintaining Receivables, 3rd Party Contracts, Enrollment Appointments, Academic Records Management and Graduation.
- (2) UNR to complete all Campus Community and Admission setups
- (3) UNR to begin Class Schedule and Query training.
- (4) Continue conversions of Catalog, Class Schedule and Transfer Credit Rules
- (5) TMCC and UNLV will be disbursing Financial Aid in August
- (6) Continuing to update the AA Degree Audit based on returning validation packets for both UNLV and TMCC

Current Issues / Concerns:

- (1) Resource limitations around EMP/OBIEE continues to prevent/hamper the ability to get reports to end users and managers. Reports for the Fall term will have to come from the transaction system and there are few individuals who can create them.
- (2) As new PeopleSoft business processes continue to mature, additional challenges are being uncovered, which require time and resources to overcome.
- (3) The complexity, quantity and timing of competing needs between pilot and co-pilot institutions (even between individual campuses), may overtax the current level of planned consulting resources.