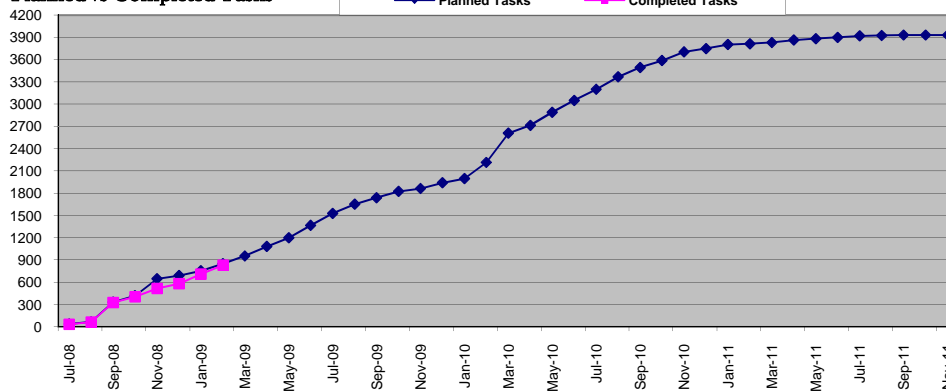


| Pilot          |             |
|----------------|-------------|
| Major Go-Lives | Target Date |
| Admissions     | 10/1/2009   |
| Financial Aid  | 2/1/2010    |
| Registration   | 3/15/2010   |
| Transcripts    | 9/1/2010    |
|                |             |
| Co-Pilot       |             |
| Major Go-Lives | Target Date |
| Admissions     | 10/1/2010   |
| Financial Aid  | 2/1/2011    |
| Registration   | 3/15/2011   |
| Transcripts    | 9/1/2011    |

| Modifications | Count |
|---------------|-------|
| Requested     | 28    |
| Approved      | 23    |
|               |       |
| Developed     | 16    |
| Tested        | 15    |

| Start Date          | Project Milestone                     | End Date  | Status      |
|---------------------|---------------------------------------|-----------|-------------|
| 08/01/08            | Academic Structure Defined            | 10/01/08  | Completed   |
| 09/01/08            | Course Catalog Data Mapping           | 01/15/09  | Completed   |
| 10/01/08            | Bio/Demo Conversion                   | 03/01/09  | In-Progress |
| 10/01/08            | Production Use – Admissions           | 10/1/2009 | In-Progress |
| 10/01/08            | Future Term Class Schedule Initiated  | 10/1/2009 | In-Progress |
| 10/01/08            | Financial Aid ISIRs Loaded            | 2/1/2010  | In-Progress |
| 12/01/08            | Enrollment/Course Registration        | 3/1/2010  | In-Progress |
| 10/01/08            | Financial Aid Award Letters Generated | 4/1/2010  | In-Progress |
| 10/01/08            | Production Use - Student Payments     | 5/1/2010  | In-Progress |
| 04/01/09            | Production Use - Academic Transcripts | 8/1/2010  | In-Progress |
| Co-Pilot Milestones |                                       |           |             |
| 11/01/09            | Production Use – Admissions           | 10/1/2010 | Not Started |
| 11/01/09            | Future Term Class Schedule Initiated  | 10/1/2010 | Not Started |
| 05/01/10            | Financial Aid ISIRs Loaded            | 2/1/2011  | Not Started |
| 08/01/10            | Enrollment/Course Registration        | 3/1/2011  | Not Started |
|                     |                                       | 4/1/2011  |             |
| 05/01/10            | Financial Aid Award Letters Generated |           | Not Started |
| 05/01/10            | Production Use - Student Payments     | 5/1/2011  | Not Started |
|                     |                                       | 8/1/2011  |             |
| 05/01/10            | Production Use - Academic Transcripts |           | Not Started |

**Planned vs Completed Tasks**



**Tasks In Progress (> 0%, but < 100% Complete) = 109**

**Recent Activity / Accomplishments (Last 30 Days):**

- (1) IDPs for; AA Analysis Database, AA Reports, Grading, Repeat Checking, Graduation, Academic Transcripts, Billing, Refunding, Satisfactory Academic Progress, Pell, FISAP, Ability to Benefit, Bookstore Charging
- (2) PeopleTools technical training classes held at UNLV
- (3) New hardware/environments - Setups were migrated and validated and teams started using the new/permanent environments
- (4) Visited Arizona State University to learn about their EPM and Portal projects
- (5) Conducted a Modification Review session in Reno - reviewed 4 mods.
- (6) Continuing to revise and refine the Bio/Demo and Catalog conversions.

**Key Upcoming Activities (Next 30 Days):**

- (1) IDPs for; Course Requisites, Instructor Workload, Packaging Plans and Equations,
- (2) Conducting a walkthrough of student self service for all modules.
- (3) Alliance conference 3/22 - 3/25 (annual meeting of PeopleSoft Higher Education Users Group).
- (4) SEVIS process / approach to be determined
- (5) Testing completed modifications
- (6) Forming EPM (data warehouse) team
- (7) Begin developing QBU queries for AD

**Current Issues / Concerns:**

- (1) None